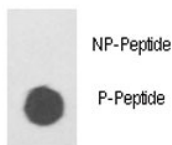


Phospho-ILK Antibody (pS343) (F48615)

Catalog No.	Formulation	Size
F48615-0.4ML	In 1X PBS, pH 7.4, with 0.09% sodium azide	0.4 ml
F48615-0.08ML	In 1X PBS, pH 7.4, with 0.09% sodium azide	0.08 ml

Bulk quote request

Availability	1-3 business days
Species Reactivity	Human
Predicted Reactivity	Bovine, Mouse, Rat
Format	Antigen affinity purified
Host	Rabbit
Clonality	Polyclonal (rabbit origin)
Isotype	Rabbit Ig
Purity	Antigen affinity
UniProt	Q13418
Applications	Dot Blot : 1:500
Limitations	This phospho-ILK antibody is available for research use only.



Dot blot analysis of phospho ILK antibody. 50ng of phos-peptide or nonphos-peptide per dot were spotted.

Description

Transduction of extracellular matrix signals through integrins influences intracellular and extracellular functions, and appears to require interaction of integrin cytoplasmic domains with cellular proteins. Integrin-linked kinase (ILK), interacts with the cytoplasmic domain of beta-1 integrin. ILK is a serine/threonine protein kinase with 4 ankyrin-like repeats, which associates with the cytoplasmic domain of beta integrins and acts as a proximal receptor kinase regulating integrin-mediated signal transduction.

Application Notes

Titration of the phospho-ILK antibody may be required due to differences in protocols and secondary/substrate sensitivity.

Immunogen

This phospho-ILK antibody was produced from rabbits immunized with a KLH conjugated synthetic phosphopeptide corresponding to amino acid residues surrounding pS343 of human ILK.

Storage

Aliquot the phospho-ILK antibody and store frozen at -20oC or colder. Avoid repeated freeze-thaw cycles.