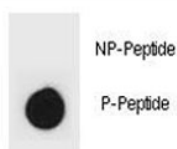


Phospho-IKK beta Antibody (pY609) (F48824)

Catalog No.	Formulation	Size
F48824-0.4ML	In 1X PBS, pH 7.4, with 0.09% sodium azide	0.4 ml
F48824-0.08ML	In 1X PBS, pH 7.4, with 0.09% sodium azide	0.08 ml

[Bulk quote request](#)

Availability	1-3 business days
Species Reactivity	Human
Predicted Reactivity	Bovine, Mouse
Format	Antigen affinity purified
Host	Rabbit
Clonality	Polyclonal (rabbit origin)
Isotype	Rabbit Ig
Purity	Antigen affinity
UniProt	O14920
Applications	Dot Blot : 1:500
Limitations	This phospho-IKK beta antibody is available for research use only.



Dot blot analysis of phospho-IKK beta antibody. 50ng of phos-peptide or nonphos-peptide per dot were spotted.

Description

NFKB1 or NFKB2 is bound to REL, RELA, or RELB to form the NFKB complex. The NFKB complex is inhibited by I-kappa-B proteins (NFKBIA or NFKBIB), which inactivate NF-kappa-B by trapping it in the cytoplasm. Phosphorylation of serine residues on the I-kappa-B proteins by kinases (IKBKA or IKBKB) marks them for destruction via the ubiquitination pathway, thereby allowing activation of the NF-kappa-B complex. Activated NFKB complex translocates into the nucleus and binds DNA at kappa-B-binding motifs such as 5-prime GGGRNNYYCC 3-prime or 5-prime HGGARNYYCC 3-prime

(where H is A, C, or T; R is an A or G purine; and Y is a C or T pyrimidine).

Application Notes

Titration of the phospho-IKK beta antibody may be required due to differences in protocols and secondary/substrate sensitivity.

Immunogen

This phospho-IKK beta antibody was produced from rabbits immunized with a KLH conjugated synthetic phosphopeptide corresponding to amino acid residues surrounding pY609 of human IKKB.

Storage

Aliquot the phospho-IKK beta antibody and store frozen at -20oC or colder. Avoid repeated freeze-thaw cycles.