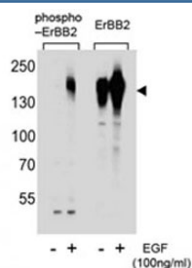


Phospho-HER2 Antibody (pS1107) (F48687)

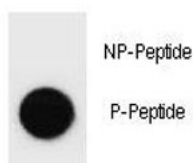
Catalog No.	Formulation	Size
F48687-0.4ML	In 1X PBS, pH 7.4, with 0.09% sodium azide	0.4 ml
F48687-0.08ML	In 1X PBS, pH 7.4, with 0.09% sodium azide	0.08 ml

Bulk quote request

Availability	1-3 business days
Species Reactivity	Human
Format	Antigen affinity purified
Clonality	Polyclonal (rabbit origin)
Isotype	Rabbit Ig
Purity	Antigen affinity
UniProt	P04626
Applications	Western Blot : 1:1000 Dot Blot : 1:500
Limitations	This phospho-HER2 antibody is available for research use only.



Western blot analysis of extracts from A431 cells, untreated or treated with EGF, using phospho-HER2 antibody (left) or nonpho Ab (right).



Dot blot analysis of phospho-HER2 antibody. 50ng of phos-peptide or nonphos-peptide per dot were spotted.

Description

This gene encodes a member of the epidermal growth factor (EGF) receptor family of receptor tyrosine kinases. This protein has no ligand binding domain of its own and therefore cannot bind growth factors. However, it does bind tightly to other ligand-bound EGF receptor family members to form a heterodimer, stabilizing ligand binding and enhancing kinase-mediated activation of downstream signalling pathways, such as those involving mitogen-activated protein kinase and phosphatidylinositol-3 kinase. Allelic variations at amino acid positions 654 and 655 of isoform a (positions 624 and 625 of isoform b) have been reported, with the most common allele, Ile654/Ile655, shown here. Amplification and/or overexpression of this gene has been reported in numerous cancers, including breast and ovarian tumors. Alternative splicing results in several additional transcript variants, some encoding different isoforms and others that have not been fully characterized.

Application Notes

Titration of the phospho-HER2 antibody may be required due to differences in protocols and secondary/substrate sensitivity.

Immunogen

This phospho-HER2 antibody was produced from rabbits immunized with a KLH conjugated synthetic phosphopeptide corresponding to amino acid residues surrounding pS1107 of human HER2/ERBB2.

Storage

Aliquot the phospho-HER2 antibody and store frozen at -20oC or colder. Avoid repeated freeze-thaw cycles.