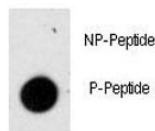


Phospho-GFAP Antibody (pS8) (F48572)

Catalog No.	Formulation	Size
F48572-0.4ML	In 1X PBS, pH 7.4, with 0.09% sodium azide	0.4 ml
F48572-0.08ML	In 1X PBS, pH 7.4, with 0.09% sodium azide	0.08 ml

[Bulk quote request](#)

Availability	1-3 business days
Species Reactivity	Human
Format	Antigen affinity purified
Host	Rabbit
Clonality	Polyclonal (rabbit origin)
Isotype	Rabbit Ig
Purity	Antigen affinity
UniProt	P14136
Applications	Dot Blot : 1:500
Limitations	This phospho-GFAP antibody is available for research use only.



Dot blot analysis of phospho-GFAP antibody. 50ng of phos-peptide or nonphos-peptide per dot were spotted.

Description

GFAP is one of the major intermediate filament proteins of mature astrocytes. It is used as a marker to distinguish astrocytes from other glial cells during development. Mutations in this gene cause Alexander disease, a rare disorder of astrocytes in the central nervous system.

Application Notes

Titration of the phospho-GFAP antibody may be required due to differences in protocols and secondary/substrate sensitivity.

Immunogen

This phospho-GFAP antibody was produced from rabbits immunized with a KLH conjugated synthetic phosphopeptide corresponding to amino acid residues surrounding pS8 of human GFAP.

Storage

Aliquot the phospho-GFAP antibody and store frozen at -20oC or colder. Avoid repeated freeze-thaw cycles.