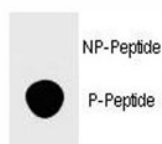


## Phospho-FOXP3 Antibody (pS418) (F48635)

Catalog No.	Formulation	Size
F48635-0.4ML	In 1X PBS, pH 7.4, with 0.09% sodium azide	0.4 ml
F48635-0.08ML	In 1X PBS, pH 7.4, with 0.09% sodium azide	0.08 ml

[Bulk quote request](#)

<b>Availability</b>	1-3 business days
<b>Species Reactivity</b>	Human
<b>Predicted Reactivity</b>	Primate
<b>Format</b>	Antigen affinity purified
<b>Host</b>	Rabbit
<b>Clonality</b>	Polyclonal (rabbit origin)
<b>Isotype</b>	Rabbit Ig
<b>Purity</b>	Antigen affinity
<b>UniProt</b>	Q9BZS1
<b>Applications</b>	Dot Blot : 1:500
<b>Limitations</b>	This phospho-FOXP3 antibody is available for research use only.



Dot blot analysis of phospho-FOXP3 antibody. 50ng of phos-peptide or nonphos-peptide per dot were spotted.

## Description

The protein is a member of the forkhead/winged-helix family of transcriptional regulators. Defects in this gene are the cause of immunodeficiency polyendocrinopathy, enteropathy, X-linked syndrome (IPEX), also known as X-linked autoimmunity-immunodeficiency syndrome.

## Application Notes

Titration of the phospho-FOXP3 antibody may be required due to differences in protocols and secondary/substrate sensitivity.

## Immunogen

This phospho-FOXP3 antibody was produced from rabbits immunized with a KLH conjugated synthetic phosphopeptide corresponding to amino acid residues surrounding pS418 of human FOXP3.

## Storage

Aliquot the phospho-FOXP3 antibody and store frozen at -20oC or colder. Avoid repeated freeze-thaw cycles.

## Alternate Names

Scurfin