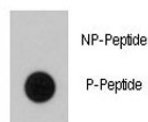


Phospho-BRAF Antibody (pT400) (F48555)

Catalog No.	Formulation	Size
F48555-0.4ML	In 1X PBS, pH 7.4, with 0.09% sodium azide	0.4 ml
F48555-0.08ML	In 1X PBS, pH 7.4, with 0.09% sodium azide	0.08 ml

[Bulk quote request](#)

Availability	1-3 business days
Species Reactivity	Human
Predicted Reactivity	Mouse
Format	Antigen affinity purified
Host	Rabbit
Clonality	Polyclonal (rabbit origin)
Isotype	Rabbit Ig
Purity	Antigen affinity
UniProt	P15056
Applications	Dot Blot : 1:500
Limitations	This phospho-BRAF antibody is available for research use only.



NP-Peptide
P-Peptide

Dot blot analysis of phospho-BRAF antibody. 50ng of phos-peptide or nonphos-peptide per dot were spotted.

Description

BRAF is involved in the transduction of mitogenic signals from the cell membrane to the nucleus. It may play a role in the postsynaptic responses of hippocampal neurons. Defects in BRAF are a cause of cardiofaciocutaneous syndrome (CFC syndrome), and a wide range of cancers such as lung cancer, non-Hodgkins lymphoma, and colorectal cancer.

Application Notes

Titration of the phospho-BRAF antibody may be required due to differences in protocols and secondary/substrate sensitivity.

Immunogen

This phospho-BRAF antibody was produced from rabbits immunized with a KLH conjugated synthetic phosphopeptide corresponding to amino acid residues surrounding pT400 of human BRAF.

Storage

Aliquot the phospho-BRAF antibody and store frozen at -20oC or colder. Avoid repeated freeze-thaw cycles.