

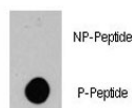
## Phospho-BRAF Antibody (pS445) (F48514)

Catalog No.	Formulation	Size
F48514-0.4ML	In 1X PBS, pH 7.4, with 0.09% sodium azide	0.4 ml
F48514-0.08ML	In 1X PBS, pH 7.4, with 0.09% sodium azide	0.08 ml

[Bulk quote request](#)

<b>Availability</b>	1-3 business days
<b>Species Reactivity</b>	Human
<b>Predicted Reactivity</b>	Chicken, Mouse
<b>Format</b>	Antigen affinity purified
<b>Host</b>	Rabbit
<b>Clonality</b>	Polyclonal (rabbit origin)
<b>Isotype</b>	Rabbit Ig
<b>Purity</b>	Antigen affinity
<b>UniProt</b>	P15056
<b>Applications</b>	Dot Blot : 1:500
<b>Limitations</b>	This phospho-BRAF antibody is available for research use only.

Dot blot analysis of phospho-BRAF antibody. 50ng of phos-peptide or nonphos-peptide per dot were spotted.



## Description

BRAF is involved in the transduction of mitogenic signals from the cell membrane to the nucleus. It may play a role in the postsynaptic responses of hippocampal neuron. Defects in BRAF are a cause of cardiofaciocutaneous syndrome (CFC syndrome), and a wide range of cancers such as lung cancer, non-Hodgkins lymphoma, and colorectal cancer.

## Application Notes

Titration of the phospho-BRAF antibody may be required due to differences in protocols and secondary/substrate sensitivity.

## Immunogen

This phospho-BRAF antibody was produced from rabbits immunized with a KLH conjugated synthetic phosphopeptide corresponding to amino acid residues surrounding pS445 of human BRAF.

## Storage

Aliquot the phospho-BRAF antibody and store frozen at -20oC or colder. Avoid repeated freeze-thaw cycles.