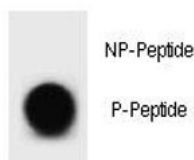


Phospho-Bcl2 Antibody (pT56) (F48789)

Catalog No.	Formulation	Size
F48789-0.4ML	In 1X PBS, pH 7.4, with 0.09% sodium azide	0.4 ml
F48789-0.08ML	In 1X PBS, pH 7.4, with 0.09% sodium azide	0.08 ml

[Bulk quote request](#)

Availability	1-3 business days
Species Reactivity	Human
Format	Antigen affinity purified
Host	Rabbit
Clonality	Polyclonal (rabbit origin)
Isotype	Rabbit Ig
Purity	Antigen affinity
UniProt	P10415
Applications	Dot Blot : 1:500
Limitations	This phospho-Bcl2 antibody is available for research use only.



Dot blot analysis of phospho Bcl2 antibody. 50ng of phos-peptide or nonphos-peptide per dot were spotted.

Description

This gene encodes an integral outer mitochondrial membrane protein that blocks the apoptotic death of some cells such as lymphocytes. Constitutive expression of BCL2, such as in the case of translocation of BCL2 to Ig heavy chain locus, is thought to be the cause of follicular lymphoma. Two transcript variants, produced by alternate splicing, differ in their C-terminal ends. [provided by RefSeq].

Application Notes

Titration of the phospho-Bcl2 antibody may be required due to differences in protocols and secondary/substrate

sensitivity.

Immunogen

This phospho-Bcl2 antibody was produced from rabbits immunized with a KLH conjugated synthetic phosphopeptide corresponding to amino acid residues surrounding pT56 of human Bcl-2.

Storage

Aliquot the phospho-Bcl2 antibody and store frozen at -20oC or colder. Avoid repeated freeze-thaw cycles.