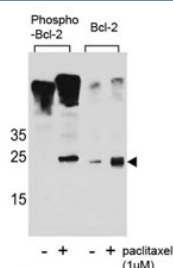


Phospho-Bcl-2 Antibody (pS70) (F48746)

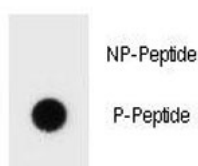
Catalog No.	Formulation	Size
F48746-0.4ML	In 1X PBS, pH 7.4, with 0.09% sodium azide	0.4 ml
F48746-0.08ML	In 1X PBS, pH 7.4, with 0.09% sodium azide	0.08 ml

[Bulk quote request](#)

Availability	1-3 business days
Species Reactivity	Human
Format	Antigen affinity purified
Clonality	Polyclonal (rabbit origin)
Isotype	Rabbit Ig
Purity	Antigen affinity
UniProt	P10415
Applications	Dot Blot : 1:500 Western Blot : 1:1000
Limitations	This phospho-Bcl-2 antibody is available for research use only.



Western blot analysis of extracts from Jurkat cells, untreated or treated with Paclitaxel, using phospho Bcl-2 antibody (left) or nonphos Ab (right).



Dot blot analysis of phospho-Bcl-2 antibody. 50ng of phos-peptide or nonphos-peptide per dot were spotted.

Description

This gene encodes an integral outer mitochondrial membrane protein that blocks the apoptotic death of some cells such as lymphocytes. Constitutive expression of BCL2, such as in the case of translocation of BCL2 to Ig heavy chain locus, is thought to be the cause of follicular lymphoma. Two transcript variants, produced by alternate splicing, differ in their C-terminal ends. [provided by RefSeq].

Application Notes

Titration of the phospho-Bcl-2 antibody may be required due to differences in protocols and secondary/substrate sensitivity.

Immunogen

This phospho-Bcl-2 antibody was produced from rabbits immunized with a KLH conjugated synthetic phosphopeptide corresponding to amino acid residues surrounding pS70 of human Bcl-2.

Storage

Aliquot the phospho-Bcl-2 antibody and store frozen at -20oC or colder. Avoid repeated freeze-thaw cycles.