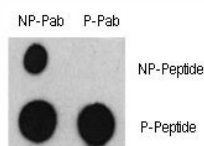


Phospho-ATF2 Antibody (pS322) (F48498)

Catalog No.	Formulation	Size
F48498-0.4ML	In 1X PBS, pH 7.4, with 0.09% sodium azide	0.4 ml
F48498-0.08ML	In 1X PBS, pH 7.4, with 0.09% sodium azide	0.08 ml

[Bulk quote request](#)

Availability	1-3 business days
Species Reactivity	Human
Format	Antigen affinity purified
Host	Rabbit
Clonality	Polyclonal (rabbit origin)
Isotype	Rabbit Ig
Purity	Antigen affinity
UniProt	P15336
Applications	Dot Blot : 1:500
Limitations	This phospho-ATF2 antibody is available for research use only.



Dot blot analysis of phospho-ATF2 antibody and nonphos ATF2 pAb. 50ng of phospho-peptide or nonphos-peptide per dot were spotted.

Description

ATF2 is a transcription factor that is a member of the leucine zipper family of DNA binding proteins. This protein binds to the cAMP-responsive element (CRE), an octameric palindrome. The protein forms a homodimer or heterodimer with c-Jun and stimulates CRE-dependent transcription. The protein is also a histone acetyltransferase (HAT) that specifically acetylates histones H2B and H4 in vitro; thus it may represent a class of sequence-specific factors that activate transcription by direct effects on chromatin components.

Application Notes

Titration of the phospho-ATF2 antibody may be required due to differences in protocols and secondary/substrate sensitivity.

Immunogen

This phospho-ATF2 antibody was produced from rabbits immunized with a KLH conjugated synthetic phosphopeptide corresponding to amino acid residues surrounding pS322 of human ATF2.

Storage

Aliquot the phospho-ATF2 antibody and store frozen at -20oC or colder. Avoid repeated freeze-thaw cycles.