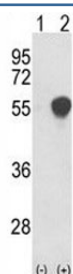


## PHGDH Antibody (F48338)

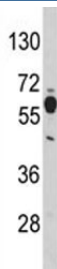
Catalog No.	Formulation	Size
F48338-0.4ML	In 1X PBS, pH 7.4, with 0.09% sodium azide	0.4 ml
F48338-0.08ML	In 1X PBS, pH 7.4, with 0.09% sodium azide	0.08 ml

[Bulk quote request](#)

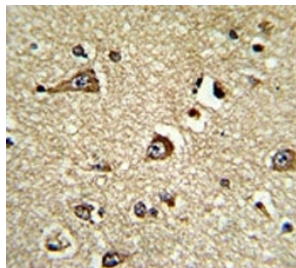
<b>Availability</b>	1-3 business days
<b>Species Reactivity</b>	Human, Mouse
<b>Predicted Reactivity</b>	Bovine, Pig, Primate
<b>Format</b>	Purified
<b>Host</b>	Rabbit
<b>Clonality</b>	Polyclonal (rabbit origin)
<b>Isotype</b>	Rabbit Ig
<b>Purity</b>	Purified
<b>UniProt</b>	O43175
<b>Applications</b>	Western Blot : 1:1000 IHC (Paraffin) : 1:50-1:100 Flow Cytometry : 1:10-1:50
<b>Limitations</b>	This PHGDH antibody is available for research use only.



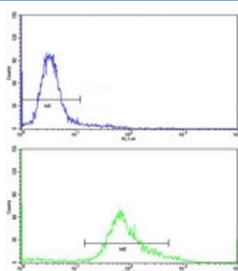
Western blot analysis of PHGDH antibody and 293 cell lysate either nontransfected (Lane 1) or transiently transfected with the PHGDH gene (2). Predicted molecular weight ~56 kDa.



Western blot analysis of PHGDH antibody and mouse brain tissue lysate. Predicted molecular weight ~56 kDa.



IHC analysis of FFPE human brain tissue stained with PHGDH antibody



Flow cytometric analysis of HeLa cells using PHGDH antibody (green) compared to a [negative control](#) (blue). FITC-conjugated goat-anti-rabbit secondary Ab was used for the analysis.

## Description

3-Phosphoglycerate dehydrogenase catalyzes the transition of 3-phosphoglycerate into 3-phosphohydroxypyruvate, which is the first and rate-limiting step in the phosphorylated pathway of serine biosynthesis, using NAD<sup>+</sup>/NADH as a cofactor.

## Application Notes

Titration of the PHGDH antibody may be required due to differences in protocols and secondary/substrate sensitivity.

## Immunogen

A portion of amino acids 140-168 from the human protein was used as the immunogen for this PHGDH antibody.

## Storage

Aliquot the PHGDH antibody and store frozen at -20°C or colder. Avoid repeated freeze-thaw cycles.