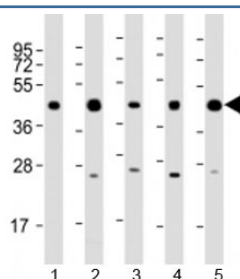


PHF6 Antibody / PHD finger protein 6 (F53893)

Catalog No.	Formulation	Size
F53893-0.2ML	In 1X PBS, pH 7.4, with 0.09% sodium azide	0.2 ml
F53893-0.05ML	In 1X PBS, pH 7.4, with 0.09% sodium azide	0.05 ml

[Bulk quote request](#)

Availability	1-3 business days
Species Reactivity	Human
Predicted Reactivity	Bovine
Format	Antigen affinity purified
Host	Rabbit
Clonality	Polyclonal (rabbit origin)
Isotype	Rabbit Ig
Purity	Antigen affinity
UniProt	Q8IWS0
Applications	Western Blot : 1:1000-2000
Limitations	This PHF6 antibody is available for research use only.



Western blot testing of human 1) 293T/17, 2) A431, 3) HeLa, 4) Jurkat and 5) K562 cell lysate with PHF6 antibody at 1:2000. Predicted molecular weight: 41 kDa.

Description

This gene is a member of the plant homeodomain (PHD)-like finger (PHF) family. It encodes PHD finger protein 6, a protein with two PHD-type zinc finger domains, indicating a potential role in transcriptional regulation, that localizes to the nucleolus. Mutations affecting the coding region of this gene or the splicing of the transcript have been associated with Borjeson-Forssman-Lehmann syndrome (BFLS), a disorder characterized by mental retardation, epilepsy, hypogonadism, hypometabolism, obesity, swelling of subcutaneous tissue of the face, narrow palpebral fissures, and large ears. Alternate

splicing results in multiple transcript variants, encoding different isoforms. [RefSeq]

Application Notes

Due to differences in protocols and secondary/substrate sensitivity, titration of the PHF6 antibody may be required for optimal performance.

Immunogen

A portion of amino acids 315-349 from the human protein was used as the immunogen for the PHF6 antibody.

Storage

Aliquot the PHF6 antibody and store frozen at -20oC or colder. Avoid repeated freeze-thaw cycles.