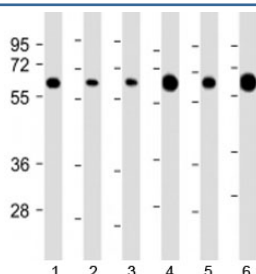


PGM1 Antibody / Phosphoglucomutase 1 (F53820)

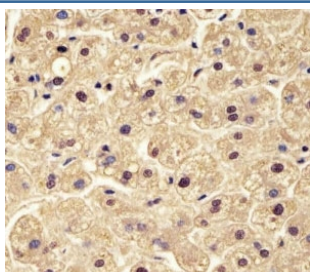
Catalog No.	Formulation	Size
F53820-0.2ML	In 1X PBS, pH 7.4, with 0.09% sodium azide	0.2 ml
F53820-0.05ML	In 1X PBS, pH 7.4, with 0.09% sodium azide	0.05 ml

[Bulk quote request](#)

Availability	1-3 business days
Species Reactivity	Human, Mouse
Predicted Reactivity	Rat
Format	Antigen affinity purified
Clonality	Polyclonal (rabbit origin)
Isotype	Rabbit Ig
Purity	Antigen affinity
UniProt	P36871
Localization	Nuclear, cytoplasmic
Applications	Western Blot : 1:1000-2000 IHC (FFPE) : 1:25
Limitations	This PGM1 antibody is available for research use only.



Western blot testing of 1) human HeLa, 2) human Jurkat, 3) human HepG2, 4) human liver, 5) mouse brain and 6) mouse heart lysate with PGM1 antibody at 1:2000. Predicted molecular weight: 61 kDa.



IHC testing of FFPE human liver with PGM1 antibody at 1:25. HIER: steamed in pH6 citrate buffer.

Description

Phosphoglucomutase 1 is an enzyme that participates in both the breakdown and synthesis of glucose.

Application Notes

Titration of the PGM1 antibody may be required due to differences in protocols and substrate sensitivity.

Immunogen

A portion of amino acids 251-282 from the human protein was used as the immunogen for the PGM1 antibody.

Storage

Aliquot the PGM1 antibody and store frozen at -20oC or colder. Avoid repeated freeze-thaw cycles.