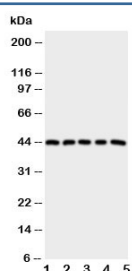


PGE Receptor Antibody, EP1 subtype (R30660)

Catalog No.	Formulation	Size
R30660	0.5mg/ml if reconstituted with 0.2ml sterile DI water	100 ug

Bulk quote request

Availability	1-3 business days
Species Reactivity	Human
Format	Antigen affinity purified
Host	Rabbit
Clonality	Polyclonal (rabbit origin)
Isotype	Rabbit IgG
Purity	Antigen affinity
Buffer	Lyophilized from 1X PBS with 2.5% BSA and 0.025% sodium azide/thimerosal
UniProt	P34995
Applications	Western Blot : 0.5-1ug/ml
Limitations	This PGE Receptor antibody is available for research use only.



Western blot testing of PGE Receptor antibody and Lane 1: HeLa; 2: A549; 3: MCF-7; 4: MM231; 5: MM453 cell lysate

Description

Prostaglandin E Receptor 1 is a 402 amino acid protein with a predicted molecular mass of 44KD and has the seven transmembrane-spanning domains common to all G protein-coupled receptors. The PTGER1 gene is mapped to chromosome 19p13.1. The protein encoded by this gene is a member of the G protein-coupled receptor family. This protein is one of four receptors identified for prostaglandin E (PGE). Through a phosphatidylinositol-calcium second messenger system, Gq proteins mediate this receptor's activity. Knockout studies in mice suggested a role of this receptor in mediating algnesia and in regulation of blood pressure. Studies in mice also suggested that this gene may mediate adrenocorticotrophic hormone response to bacterial endotoxin.

Application Notes

The stated application concentrations are suggested starting amounts. Titration of the PGE Receptor antibody may be required due to differences in protocols and secondary/substrate sensitivity.

Immunogen

An amino acid sequence from the C-terminus of human PGE Receptor EP1 subtype (AWEASSLRSSRHSGLSHF) was used as the immunogen for this PGE Receptor antibody.

Storage

After reconstitution, the PGE Receptor antibody can be stored for up to one month at 4°C. For long-term, aliquot and store at -20°C. Avoid repeated freezing and thawing.