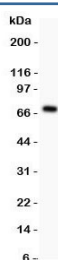


Perlecan Antibody (R31690)

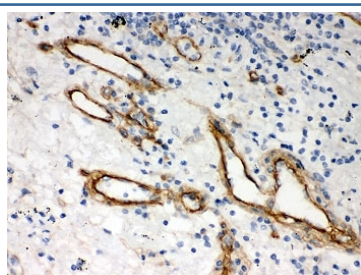
Catalog No.	Formulation	Size
R31690	0.5mg/ml if reconstituted with 0.2ml sterile DI water	100 ug

Bulk quote request

Availability	1-3 business days
Species Reactivity	Human
Format	Antigen affinity purified
Host	Rabbit
Clonality	Polyclonal (rabbit origin)
Isotype	Rabbit IgG
Purity	Antigen affinity
Buffer	Lyophilized from 1X PBS with 2.5% BSA and 0.025% sodium azide
Gene ID	3339
Applications	Western Blot : 0.5-1ug/ml IHC (FFPE) : 0.5-1ug/ml
Limitations	This Perlecan antibody is available for research use only.



Western blot testing of Perlecan antibody and recombinant human protein (0.5ng)



IHC-P: Perlecan antibody testing of human lung cancer tissue

Description

Perlecan (PLC) also known as HSPG2, is a protein that in humans is encoded by the HSPG2 gene. It is mapped to 1p36.12. Perlecan is highly conserved across species and the available data indicate that it has evolved from ancient ancestors by gene duplication and exonshuffling. It is a key component of the vascular extracellular matrix where it interacts with a variety of other matrix components and helps to maintain the endothelial barrier function. It is a potent inhibitor of smooth muscle cell proliferation and is thus thought to help maintain vascular homeostasis. Perlecan can also promote growth factor (e.g., FGF2) activity and thus stimulate endothelial growth and re-generation.

Application Notes

The stated application concentrations are suggested starting amounts. Titration of the Perlecan antibody may be required due to differences in protocols and secondary/substrate sensitivity.

Immunogen

Human partial recombinant protein (AA 524-701) was used as the immunogen for this Perlecan antibody.

Storage

After reconstitution, the Perlecan antibody can be stored for up to one month at 4°C. For long-term, aliquot and store at -20°C. Avoid repeated freezing and thawing.