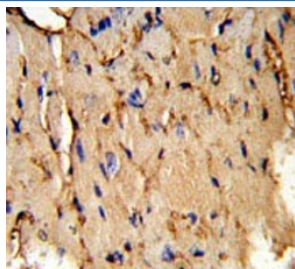


PEA15 Antibody (F54972)

Catalog No.	Formulation	Size
F54972-0.4ML	In 1X PBS, pH 7.4, with 0.09% sodium azide	0.4 ml
F54972-0.08ML	In 1X PBS, pH 7.4, with 0.09% sodium azide	0.08 ml

[Bulk quote request](#)

Availability	1-3 business days
Species Reactivity	Human, Mouse
Format	Purified
Host	Rabbit
Clonality	Polyclonal (rabbit origin)
Isotype	Rabbit Ig
Purity	Antigen affinity purified
UniProt	Q15121
Localization	Cytoplasmic
Applications	Flow Cytometry : 1:10-1:50 (1x10 ⁶ cells) Immunohistochemistry (FFPE) : 1:50-1:100 Western Blot : 1:500-1:1000
Limitations	This PEA15 antibody is available for research use only.



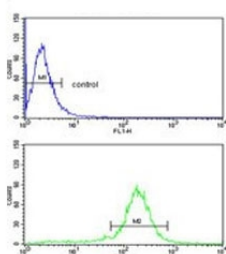
IHC testing of FFPE mouse heart tissue with PEA15 antibody. HIER: steam section in pH6 citrate buffer for 20 min and allow to cool prior to staining.

kDa
72
55
36
28
17
11

Western blot testing of human T-47D cell lysate with PEA15 antibody. Predicted molecular weight ~15 kDa.

kDa
55
36
28
17
11

Western blot testing of mouse lung tissue lysate with PEA15 antibody. Predicted molecular weight ~15 kDa.



Flow cytometry testing of human MDA-MB-231 cells with PEA15 antibody; Blue=isotype control, Green= PEA15 antibody.

Description

PEA-15 is a death effector domain (DED)-containing protein predominantly expressed in the central nervous system, particularly in astrocytes.

Application Notes

The stated application concentrations are suggested starting points. Titration of the PEA15 antibody may be required due to differences in protocols and secondary/substrate sensitivity.

Immunogen

A portion of amino acids 86-115 from the human protein was used as the immunogen for the PEA15 antibody.

Storage

Aliquot the PEA15 antibody and store frozen at -20oC or colder. Avoid repeated freeze-thaw cycles.