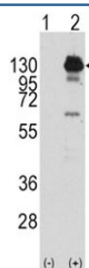


PDGFR alpha Antibody (F50656)

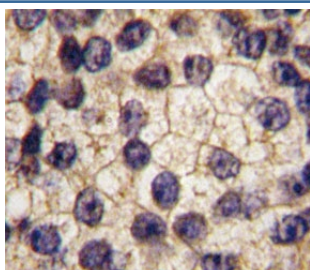
| Catalog No. | Formulation | Size |
|---------------|--|---------|
| F50656-0.4ML | In 1X PBS, pH 7.4, with 0.09% sodium azide | 0.4 ml |
| F50656-0.08ML | In 1X PBS, pH 7.4, with 0.09% sodium azide | 0.08 ml |

[Bulk quote request](#)

| | |
|-----------------------------|---|
| Availability | 1-3 business days |
| Species Reactivity | Human |
| Predicted Reactivity | Mouse, Rat, Xenopus |
| Format | Antigen affinity purified |
| Clonality | Polyclonal (rabbit origin) |
| Isotype | Rabbit Ig |
| Purity | Antigen affinity |
| UniProt | P16234 |
| Localization | Cytoplasmic, membrane |
| Applications | Western Blot : 1:1000 IHC (Paraffin) : 1:10-1:50 |
| Limitations | This PDGFR alpha antibody is available for research use only. |



Western blot analysis of PDGFR alpha antibody and 293 cell lysate (2 ug/lane) either nontransfected (Lane 1) or transiently transfected with the human gene (2). Predicted molecular weight: 120-195 kDa.



IHC analysis of FFPE human prostate carcinoma tissue stained with PDGFR alpha antibody

Description

PDGFRA is a cell surface tyrosine kinase receptor for members of the platelet-derived growth factor family. These growth factors are mitogens for cells of mesenchymal origin. The identity of the growth factor bound to a receptor monomer determines whether the functional receptor is a homodimer or a heterodimer, composed of both platelet-derived growth factor receptor alpha and beta polypeptides. Studies in knockout mice, where homozygosity is lethal, indicate that the alpha form of the platelet-derived growth factor receptor is particularly important for kidney development since mice heterozygous for the receptor exhibit defective kidney phenotypes.

Application Notes

Titration of the PDGFR alpha antibody may be required due to differences in protocols and secondary/substrate sensitivity.

Immunogen

A portion of amino acids 740-769 from the human protein was used as the immunogen for this PDGFR alpha antibody.

Storage

Aliquot the PDGFR alpha antibody and store frozen at -20oC or colder. Avoid repeated freeze-thaw cycles.