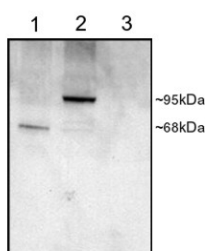


PDE4D Antibody (R35386)

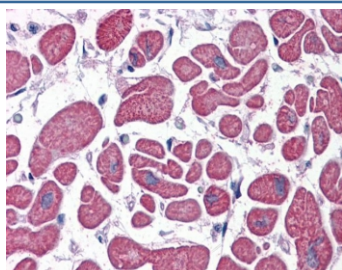
Catalog No.	Formulation	Size
R35386-100UG	0.5 mg/ml in 1X TBS, pH7.3, with 0.5% BSA (US sourced) and 0.02% sodium azide	100 ug

[Bulk quote request](#)

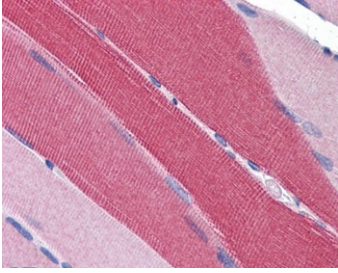
Availability	1-3 business days
Species Reactivity	Human
Format	Antigen affinity purified
Clonality	Polyclonal (goat origin)
Isotype	Goat Ig
Purity	Antigen affinity
Gene ID	5144
Localization	Cytoplasmic, membranous
Applications	Western Blot : 1-3ug/ml IHC (FFPE) : 5ug/ml Enzyme ImmunoAssay : binds recombinant protein ELISA (peptide) LOD : 1:128000
Limitations	This PDE4D antibody is available for research use only.



Western blot testing of COS cell lysates with PDE4D antibody at 1ug/ml: 1) transfected with human PDE4D1 (~91 kDa), 2) transfected with human PDE4D3 (~85 kDa), 3) untransfected.



IHC testing of FFPE human heart tissue with PDE4D antibody at 5ug/ml. Required HIER: steamed antigen retrieval with pH6 citrate buffer; AP-staining.



IHC testing of FFPE human skeletal muscle tissue with PDE4D antibody at 5ug/ml.
Required HIER: steamed antigen retrieval with pH6 citrate buffer; AP-staining.

Description

Additional name(s) for this target protein: Phosphodiesterase 4D

Application Notes

Optimal dilution of the PDE4D antibody should be determined by the researcher.

Immunogen

Amino acids QPEACVIDDRSPDT were used as the immunogen for this PDE4D antibody. This sequence is common to PDE4D1 (~91kDa), PDE4D2 (~77kDa) and PDE4D3 (~85kDa).

Storage

Aliquot and store the PDE4D antibody at -20oC.