

## PDE10A Antibody (RQ5911)

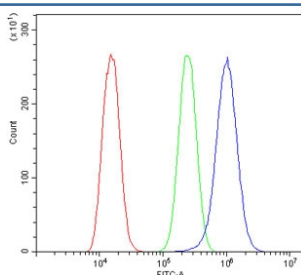
Catalog No.	Formulation	Size
RQ5911	0.5mg/ml if reconstituted with 0.2ml sterile DI water	100 ug

**Bulk quote request**

<b>Availability</b>	1-3 business days
<b>Species Reactivity</b>	Human, Mouse
<b>Format</b>	Antigen affinity purified
<b>Host</b>	Rabbit
<b>Clonality</b>	Polyclonal (rabbit origin)
<b>Isotype</b>	Rabbit IgG
<b>Purity</b>	Affinity purified
<b>Buffer</b>	Lyophilized from 1X PBS with 2% Trehalose and 0.025% sodium azide
<b>UniProt</b>	Q9Y233
<b>Applications</b>	Western Blot : 0.5-1ug/ml Flow Cytometry : 1-3ug/million cells Direct ELISA : 0.1-0.5ug/ml
<b>Limitations</b>	This PDE10A antibody is available for research use only.



Western blot testing of mouse brain lysate with PDE10A antibody. Predicted molecular weight ~100 kDa.



Flow cytometry testing of human A549 cells with PDE10A antibody at 1ug/million cells (blocked with goat sera); Red=cells alone, Green=isotype control, Blue= PDE10A antibody.

## Description

The protein encoded by this gene belongs to the cyclic nucleotide phosphodiesterase family. It plays a role in signal transduction by regulating the intracellular concentration of cyclic nucleotides. This protein can hydrolyze both cAMP and cGMP to the corresponding nucleoside 5' monophosphate, but has higher affinity for cAMP, and is more efficient with cAMP as substrate. Alternatively spliced transcript variants have been described for this gene.

## Application Notes

Optimal dilution of the PDE10A antibody should be determined by the researcher.

## Immunogen

Recombinant human protein (amino acids H515-D779) was used as the immunogen for the PDE10A antibody.

## Storage

After reconstitution, the PDE10A antibody can be stored for up to one month at 4°C. For long-term, aliquot and store at -20°C. Avoid repeated freezing and thawing.