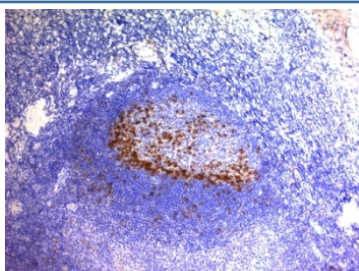


PD1 Antibody [clone SPM597] (V2777)

Catalog No.	Formulation	Size
V2777-100UG	0.2 mg/ml in 1X PBS with 0.1 mg/ml BSA (US sourced) and 0.05% sodium azide	100 ug
V2777-20UG	0.2 mg/ml in 1X PBS with 0.1 mg/ml BSA (US sourced) and 0.05% sodium azide	20 ug
V2777SAF-100UG	1 mg/ml in 1X PBS; BSA free, sodium azide free	100 ug
V2777IHC-7ML	Prediluted in 1X PBS with 0.1 mg/ml BSA (US sourced) and 0.05% sodium azide; *For IHC use only*	7 ml

[Bulk quote request](#)

Availability	1-3 business days
Species Reactivity	Human
Format	Purified
Clonality	Monoclonal (mouse origin)
Isotype	Mouse IgG1, kappa
Clone Name	SPM597
Purity	Protein G affinity chromatography
UniProt	Q15116
Localization	Cell surface & cytoplasmic
Applications	Immunohistochemistry (FFPE) : 1-2ug/ml for 30 min at RT
Limitations	This PD1 antibody is available for research use only.



IHC: Formalin-fixed, paraffin-embedded human tonsil stained with PD1 antibody (clone SPM597).

Description

PDCD1 (programmed cell death-1 protein), also PD1 and CD279, is a type I transmembrane receptor and a member of the immunoglobulin gene superfamily. It is expressed on activated T-cells, B-cells, and myeloid cells. Anti-PDCD1 is a marker of angioimmunoblastic lymphoma and suggests a unique cell of origin for this neoplasm. Unlike CD10 and BCL6, PDCD-1 is expressed by few B-cells, so anti-PDCD1 may be a more specific and useful diagnostic marker in angioimmunoblastic lymphoma. In addition, PDCD-1 expression provides evidence that angioimmunoblastic lymphoma is a neoplasm derived from germinal center-associated T-cells.

Application Notes

Optimal dilution of the PD1 antibody should be determined by the researcher.

1. Staining of formalin-fixed tissues requires boiling tissue sections in 10mM Tris with 1mM EDTA, pH 9, for 10-20 min followed by cooling at RT for 20 min
2. The prediluted format is supplied in a dropper bottle and is optimized for use in IHC. After epitope retrieval step (if required), drip mAb solution onto the tissue section and incubate at RT for 30 min.

Immunogen

Recombinant full-length human protein was used as the immunogen for the PD1 antibody.

Storage

Store the PD1 antibody at 2-8oC (with azide) or aliquot and store at -20oC or colder (without azide).