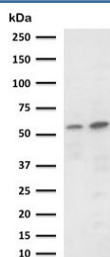


PD-L2 Antibody [clone CDLA273-1] (V7546)

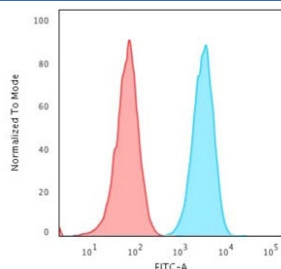
Catalog No.	Formulation	Size
V7546-100UG	0.2 mg/ml in 1X PBS with 0.1 mg/ml BSA (US sourced) and 0.05% sodium azide	100 ug
V7546-20UG	0.2 mg/ml in 1X PBS with 0.1 mg/ml BSA (US sourced) and 0.05% sodium azide	20 ug
V7546SAF-100UG	1 mg/ml in 1X PBS; BSA free, sodium azide free	100 ug

[Bulk quote request](#)

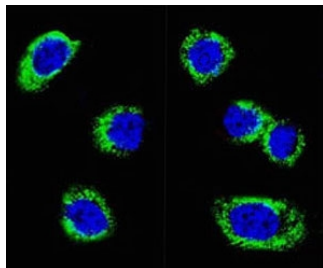
Availability	1-3 business days
Species Reactivity	Human
Format	Purified
Host	Mouse
Clonality	Monoclonal (mouse origin)
Isotype	Mouse IgG1, kappa
Clone Name	CDLA273-1
Purity	Protein G affinity chromatography
UniProt	Q9BQ51
Localization	Cytoplasm, cell surface
Applications	Western Blot : 1-2ug/ml Flow Cytometry : 1-2ug/10 ⁶ cells Immunofluorescence : 1-2ug/ml
Limitations	This PD-L2 antibody is available for research use only.



Western blot testing of 1) human Raji and 2) mouse RAW264.7 cell lysate with PD-L2 antibody (clone CDLA273-1). Expected molecular weight: 31-60 kDa depending on glycosylation level.



Flow cytometry testing of human Jurkat cells with PD-L2 antibody (clone CDLA273-1); Red=isotype control, Blue= PD-L2 antibody.



Immunofluorescent staining of human Jurkat cells with PD-L2 antibody (green, clone CDLA273-1) and DAPI nuclear stain (blue). HIER: steam section in pH6 citrate buffer for 20 min.

Description

PD-L2/PDCD1LG2 is involved in the costimulatory signal, essential for T-cell proliferation and IFNG production in a PDCD1-independent manner. Interaction with PDCD1 inhibits T-cell proliferation by blocking cell cycle progression and cytokine production. [UniProt]

Application Notes

Optimal dilution of the PD-L2 antibody should be determined by the researcher.

Immunogen

A recombinant fragment of human PD-L2 protein within amino acids 27-220 was used as the immunogen for the PD-L2 antibody.

Storage

Store the PD-L2 antibody at 2-8oC (with azide) or aliquot and store at -20oC or colder (without azide).