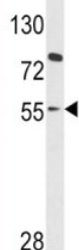


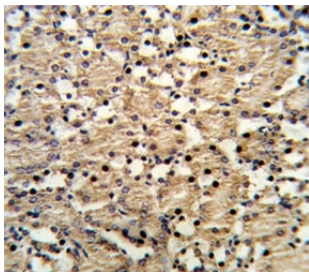
## PAX8 Antibody (F49929)

Catalog No.	Formulation	Size
F49929-0.4ML	In 1X PBS, pH 7.4, with 0.09% sodium azide	0.4 ml
F49929-0.08ML	In 1X PBS, pH 7.4, with 0.09% sodium azide	0.08 ml

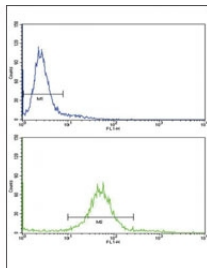
[Bulk quote request](#)

<b>Availability</b>	1-3 business days
<b>Species Reactivity</b>	Human
<b>Predicted Reactivity</b>	Mouse
<b>Format</b>	Antigen affinity purified
<b>Clonality</b>	Polyclonal (rabbit origin)
<b>Isotype</b>	Rabbit Ig
<b>Purity</b>	Antigen affinity
<b>UniProt</b>	Q06710
<b>Localization</b>	Nuclear, cytoplasmic
<b>Applications</b>	Western Blot : 1:1000 IHC (Paraffin) : 1:10-1:50 Flow Cytometry : 1:10-1:50
<b>Limitations</b>	This PAX8 antibody is available for research use only.





IHC analysis of FFPE mouse kidney stained with PAX8 antibody



Flow cytometric analysis of 293 cells using PAX8 antibody (bottom histogram) compared to a negative control (top histogram). FITC-conjugated goat-anti-rabbit secondary Ab was used for the analysis.

## Description

PAX8 is a member of the paired box (PAX) family of transcription factors. Members of this family contain a paired box domain, an octapeptide, and a paired-type homeodomain. This nuclear protein is involved in thyroid follicular cell development and expression of thyroid-specific genes.

## Application Notes

Titration of the PAX8 antibody may be required due to differences in protocols and secondary/substrate sensitivity.

## Immunogen

A portion of amino acids 285-313 from the human protein was used as the immunogen for this PAX8 antibody.

## Storage

Aliquot the PAX8 antibody and store frozen at -20°C or colder. Avoid repeated freeze-thaw cycles.