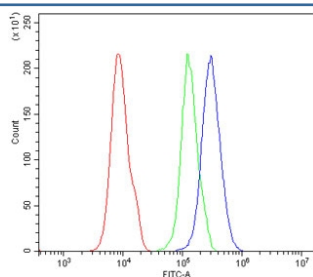


## PAX1 Antibody (RQ5906)

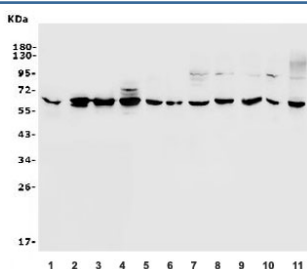
| Catalog No. | Formulation   | Size   |
|-------------|---|--------|
| RQ5906      | 0.5mg/ml if reconstituted with 0.2ml sterile DI water | 100 ug |

**Bulk quote request**

|                           |  |
|---------------------------|--|
| <b>Availability</b>       | 1-3 business days  |
| <b>Species Reactivity</b> | Human, Mouse, Rat  |
| <b>Format</b>             | Antigen affinity purified  |
| <b>Host</b>               | Rabbit   |
| <b>Clonality</b>          | Polyclonal (rabbit origin)   |
| <b>Isotype</b>            | Rabbit IgG   |
| <b>Purity</b>             | Affinity purified  |
| <b>Buffer</b>             | Lyophilized from 1X PBS with 2% Trehalose and 0.025% sodium azide                                |
| <b>UniProt</b>            | P15863   |
| <b>Applications</b>       | Western Blot : 0.5-1ug/ml<br>Flow Cytometry : 1-3ug/million cells<br>Direct ELISA : 0.1-0.5ug/ml |
| <b>Limitations</b>        | This PAX1 antibody is available for research use only.   |



Flow cytometry testing of human 293T cells with PAX1 antibody at 1ug/million cells (blocked with goat sera); Red=cells alone, Green=isotype control, Blue= PAX1 antibody.



Western blot testing of human 1) placenta, 2) SW579, 3) A431, 4) U-2 OS, 5) rat thymus, 6) rat ovary, 7) rat lung, 8) mouse thymus, 9) mouse ovary, 10) mouse lung and 11) mouse SP2/0 lysate with PAX1 antibody. Expected molecular weight: 45-55 kDa.

## Description

This gene is a member of the paired box (PAX) family of transcription factors. Members of the PAX family typically contain a paired box domain and a paired-type homeodomain. These genes play critical roles during fetal development. This gene plays a role in pattern formation during embryogenesis and may be essential for development of the vertebral column. This gene is silenced by methylation in ovarian and cervical cancers and may be a tumor suppressor gene. Mutations in this gene are also associated with vertebral malformations.

## Application Notes

Optimal dilution of the PAX1 antibody should be determined by the researcher.

## Immunogen

Recombinant human protein (amino acids S218-P382) was used as the immunogen for the PAX1 antibody.

## Storage

After reconstitution, the PAX1 antibody can be stored for up to one month at 4°C. For long-term, aliquot and store at -20°C. Avoid repeated freezing and thawing.