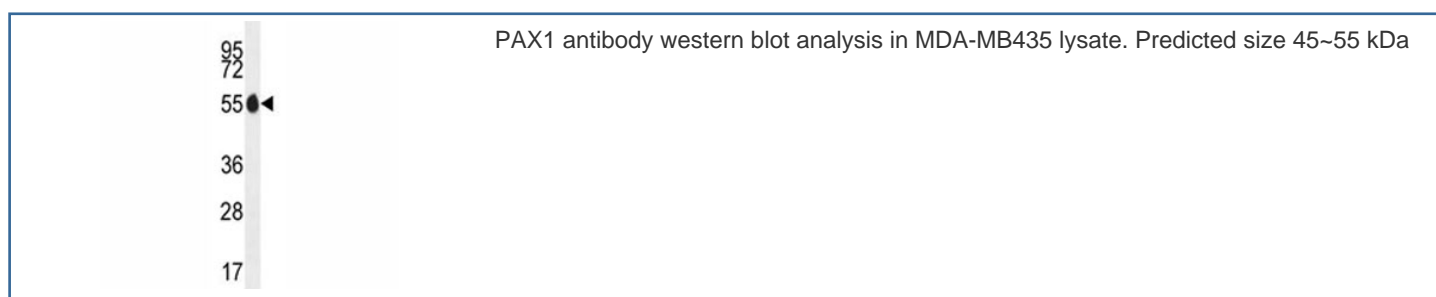


## PAX1 Antibody (F41638)

Catalog No.	Formulation	Size
F41638-0.4ML	In 1X PBS, pH 7.4, with 0.09% sodium azide	0.4 ml
F41638-0.08ML	In 1X PBS, pH 7.4, with 0.09% sodium azide	0.08 ml

[Bulk quote request](#)

<b>Availability</b>	1-3 business days
<b>Species Reactivity</b>	Human
<b>Predicted Reactivity</b>	Chicken, Mouse
<b>Format</b>	Antigen affinity purified
<b>Host</b>	Rabbit
<b>Clonality</b>	Polyclonal (rabbit origin)
<b>Isotype</b>	Rabbit Ig
<b>Purity</b>	Antigen affinity
<b>UniProt</b>	P15863
<b>Applications</b>	Western Blot : 1:1000
<b>Limitations</b>	This PAX1 antibody is available for research use only.



## Description

This protein is a transcriptional activator. It may play a role in the formation of segmented structures of the embryo. May play an important role in the normal development of the vertebral column (By similarity). [UniProt]

## Application Notes

The stated application concentrations are suggested starting points. Titration of the PAX1 antibody may be required due

to differences in protocols and secondary/substrate sensitivity.

## **Immunogen**

A portion of amino acids 163-189 from the human protein was used as the immunogen for this PAX1 antibody.

## **Storage**

Store at 4oC for up to one month. For long term, aliquot the PAX1 antibody and store frozen at -20oC or colder. Avoid repeated freeze-thaw cycles.