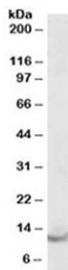


Parvalbumin Antibody (R34146)

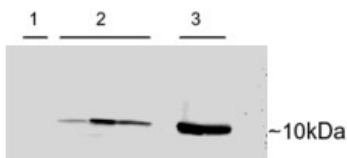
| Catalog No. | Formulation | Size |
|--------------|---|--------|
| R34146-100UG | 0.5 mg/ml in 1X TBS, pH7.3, with 0.5% BSA (US sourced) and 0.02% sodium azide | 100 ug |

[Bulk quote request](#)

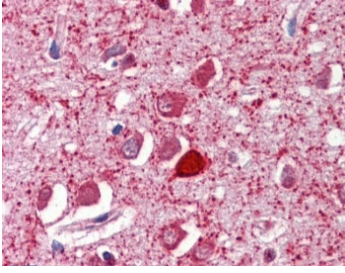
| | |
|---------------------------|---|
| Availability | 1-3 business days |
| Species Reactivity | Human, Rat |
| Format | Antigen affinity purified |
| Clonality | Polyclonal (goat origin) |
| Isotype | Goat Ig |
| Purity | Antigen affinity |
| Gene ID | 5816 |
| Localization | Cytoplasmic, nuclear |
| Applications | Western Blot : 0.1-0.3ug/ml IHC (FFPE) : 2.5-5ug/ml ELISA (peptide) LOD : 1:32000 |
| Limitations | This Parvalbumin antibody is available for research use only. |



Western blot testing of human brain lysate with Parvalbumin antibody at 0.1ug/ml.
Predicted molecular weight ~12 kDa.



Western blot of adenovirus-mediated gene transfer in rat heart cells: 1) untransfected, 2) transient transfection with human PVALB, 3) untransfected rat skeletal muscle using Parvalbumin antibody at 0.15ug/ml.



IHC testing of FFPE human brain cortex with Parvalbumin antibody at 2.5ug/ml.
Required HIER: steamed antigen retrieval with pH6 citrate buffer; AP-staining.

Description

Additional name(s) for this target protein: PVALB

Application Notes

Optimal dilution of the Parvalbumin antibody should be determined by the researcher.

Immunogen

Amino acids GVDEFSTLVAES were used as the immunogen for this Parvalbumin antibody.

Storage

Aliquot and store the Parvalbumin antibody at -20oC.