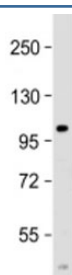


## PARP10 Antibody (F53976)

Catalog No.	Formulation	Size
F53976-0.05ML	In 1X PBS, pH 7.4, with 0.09% sodium azide	0.05 ml

**Bulk quote request**

<b>Availability</b>	1-3 business days
<b>Species Reactivity</b>	Human
<b>Format</b>	Antigen affinity purified
<b>Clonality</b>	Polyclonal (rabbit origin)
<b>Isotype</b>	Rabbit Ig
<b>Purity</b>	Antigen affinity
<b>UniProt</b>	Q53GL7
<b>Applications</b>	Western Blot : 1:1000-2000
<b>Limitations</b>	This PARP10 antibody is available for research use only.



Western blot testing of human spleen lysate with PARP10 antibody at 1:2000. Predicted molecular weight ~110 kDa but can be observed at up to ~150 kDa.

### Description

Poly [ADP-ribose] polymerase 10 may play a role in cell proliferation. May be required for the maintenance of cell cycle progression.

### Application Notes

Titration of the PARP10 antibody may be required due to differences in protocols and secondary/substrate sensitivity.

### Immunogen

A portion of amino acids 565-597 from the human protein was used as the immunogen for the PARP10 antibody.

## Storage

Aliquot the PARP10 antibody and store frozen at -20oC or colder. Avoid repeated freeze-thaw cycles.