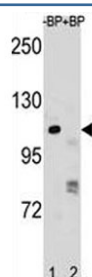


PARP1 Antibody (F47592)

Catalog No.	Formulation	Size
F47592-0.4ML	In 1X PBS, pH 7.4, with 0.09% sodium azide	0.4 ml
F47592-0.08ML	In 1X PBS, pH 7.4, with 0.09% sodium azide	0.08 ml

[Bulk quote request](#)

Availability	1-3 business days
Species Reactivity	Human
Predicted Reactivity	Mouse
Format	Antigen affinity purified
Host	Rabbit
Clonality	Polyclonal (rabbit origin)
Isotype	Rabbit Ig
Purity	Antigen affinity
UniProt	P09874
Applications	Western Blot : 1:1000
Limitations	This PARP1 antibody is available for research use only.



PARP1 antibody pre-incubated without (lane 1) and with (2) blocking peptide in NCI-H292 lysate

Description

This gene encodes a chromatin-associated enzyme, poly(ADP-ribosyl)transferase, which modifies various nuclear proteins by poly(ADP-ribosyl)ation. It is involved in the base excision repair (BER) pathway, by catalyzing the poly(ADP-ribosyl)ation of a limited number of acceptor proteins involved in chromatin architecture and in DNA metabolism. [UniProt]

Application Notes

Titration of the PARP1 antibody may be required due to differences in protocols and secondary/substrate sensitivity.

Immunogen

A portion of amino acids 123-151 from the human protein was used as the immunogen for this PARP1 antibody.

Storage

Aliquot the PARP1 antibody and store frozen at -20oC or colder. Avoid repeated freeze-thaw cycles.