

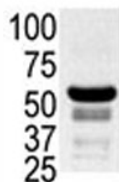
## PAK2 Antibody (F50891)

Catalog No.	Formulation	Size
F50891-0.4ML	In 1X PBS, pH 7.4, with 0.09% sodium azide	0.4 ml
F50891-0.08ML	In 1X PBS, pH 7.4, with 0.09% sodium azide	0.08 ml

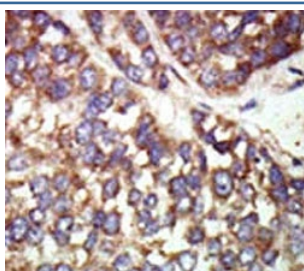
[Bulk quote request](#)

<b>Availability</b>	1-3 business days
<b>Species Reactivity</b>	Human
<b>Format</b>	Purified
<b>Host</b>	Rabbit
<b>Clonality</b>	Polyclonal (rabbit origin)
<b>Isotype</b>	Rabbit Ig
<b>Purity</b>	Purified
<b>UniProt</b>	Q13177
<b>Applications</b>	Western Blot : 1:1000 IHC (Paraffin) : 1:50-1:100
<b>Limitations</b>	This PAK2 antibody is available for research use only.

Western blot testing of ovary lysate with PAK2 antibody.



IHC analysis of FFPE human hepatocarcinoma tissue stained with the PAK2 antibody



## Description

PAK2, a member of the STE20 subfamily of Ser/Thr protein kinases, acts on a variety of targets. It phosphorylates ribosomal protein S6, histone H4 and myelin basic protein. PAK2 interacts tightly with GTP-bound but not GDP-bound CDC42/p21 and RAC1. Expression is ubiquitous, with higher levels seen in skeletal muscle, ovary, thymus and spleen. PAK2 is autophosphorylated when activated by CDC42/p21. The protein structure contains 1 CRIB domain.

## Application Notes

Titration of the PAK2 antibody may be required due to differences in protocols and secondary/substrate sensitivity.

## Immunogen

A portion of amino acids 192-222 from the human protein was used as the immunogen for this PAK2 antibody.

## Storage

Aliquot the PAK2 antibody and store frozen at -20oC or colder. Avoid repeated freeze-thaw cycles.