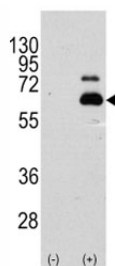


p70 S6 Kinase Antibody (F48467)

Catalog No.	Formulation	Size
F48467-0.4ML	In 1X PBS, pH 7.4, with 0.09% sodium azide	0.4 ml
F48467-0.08ML	In 1X PBS, pH 7.4, with 0.09% sodium azide	0.08 ml

[Bulk quote request](#)

Availability	1-3 business days
Species Reactivity	Human
Predicted Reactivity	Bovine, Mouse, Rabbit, Rat
Format	Antigen affinity purified
Clonality	Polyclonal (rabbit origin)
Isotype	Rabbit Ig
Purity	Antigen affinity
UniProt	P23443
Applications	Western Blot : 1:1000
Limitations	This p70 S6 Kinase antibody is available for research use only.



Western blot analysis of p70 S6 Kinase antibody and 293 cell lysate (2 ug/lane) either nontransfected (Lane 1) or transiently transfected with the RPS6KB1 gene (2). Predicted molecular weight: 60-70 kDa

Description

RPS6KB1 is a member of the RSK (ribosomal S6 kinase) family of serine/threonine kinases. This kinase contains 2 non-identical kinase catalytic domains and phosphorylates several residues of the S6 ribosomal protein. The kinase activity of this protein leads to an increase in protein synthesis and cell proliferation. Amplification of the region of DNA encoding the gene for RPS6KB1 and overexpression of this kinase are seen in some breast cancer cell lines.

Application Notes

Titration of the p70 S6 Kinase antibody may be required due to differences in protocols and secondary/substrate

sensitivity.

Immunogen

A portion of amino acids 405-434 from the human protein was used as the immunogen for this p70 S6 Kinase antibody.

Storage

Aliquot the p70 S6 Kinase antibody and store frozen at -20oC or colder. Avoid repeated freeze-thaw cycles.