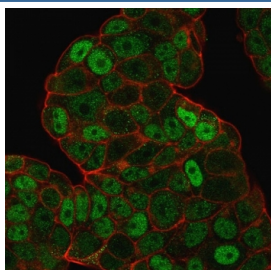


## p27Kip1 Antibody [clone SPM348] (V9001)

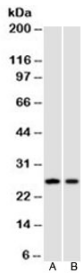
Catalog No.	Formulation	Size
V9001-100UG	0.2 mg/ml in 1X PBS with 0.1 mg/ml BSA (US sourced) and 0.05% sodium azide	100 ug
V9001-20UG	0.2 mg/ml in 1X PBS with 0.1 mg/ml BSA (US sourced) and 0.05% sodium azide	20 ug
V9001SAF-100UG	1 mg/ml in 1X PBS; BSA free, sodium azide free	100 ug
V9001IHC-7ML	Prediluted in 1X PBS with 0.1 mg/ml BSA (US sourced) and 0.05% sodium azide; *For IHC use only*	7 ml

[Bulk quote request](#)

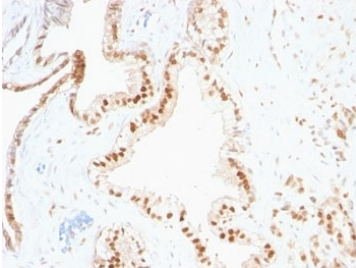
<b>Availability</b>	1-3 business days
<b>Species Reactivity</b>	Human
<b>Format</b>	Purified
<b>Host</b>	Mouse
<b>Clonality</b>	Monoclonal (mouse origin)
<b>Isotype</b>	Mouse IgG1, kappa
<b>Clone Name</b>	SPM348
<b>Purity</b>	Protein G affinity chromatography
<b>UniProt</b>	P46527
<b>Localization</b>	Nuclear
<b>Applications</b>	Western Blot : 1-2ug/ml Immunofluorescence : 1-2ug/ml Immunohistochemistry (FFPE) : 1-2ug/ml for 30 min at RT
<b>Limitations</b>	This p27Kip1 antibody is available for research use only.



Immunofluorescent staining of PFA fixed human MCF7 cells with p27Kip1 antibody (clone SPM348, green) and Phalloidin (red).



Western blot testing of human A) HeLa and B) Jurkat cell lysate using p27Kip1 antibody (clone SPM348).



IHC analysis of formalin-fixed, paraffin-embedded human prostate carcinoma stained with p27 antibody (clone SPM348).

## Description

This mAb recognizes a 27kDa protein, identified as the p27Kip1, a cell cycle regulatory mitotic inhibitor. It is highly specific and shows no cross-reaction with other related mitotic inhibitors. p27Kip1 functions as a negative regulator of G1 progression and has been proposed to function as a possible mediator of TGF- induced G1 arrest. p27Kip1 is a candidate tumor suppressor gene.

## Application Notes

The optimal dilution of the p27Kip1 antibody for each application should be determined by the researcher.

1. Staining of formalin-fixed tissues requires boiling tissue sections in pH 9 10mM Tris with 1mM EDTA for 10-20 min followed by cooling at RT for 20 minutes.
2. The prediluted format is supplied in a dropper bottle and is optimized for use in IHC. After epitope retrieval step (if required), drip mAb solution onto the tissue section and incubate at RT for 30 min.

## Immunogen

Mouse p27Kip1 protein was used as the immunogen for this p27 antibody.

## Storage

Store the p27Kip1 antibody at 2-8oC (with azide) or aliquot and store at -20oC or colder (without azide).

