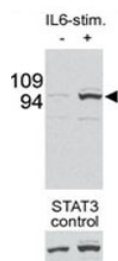


p-STAT3 Antibody (pS727) (F48455)

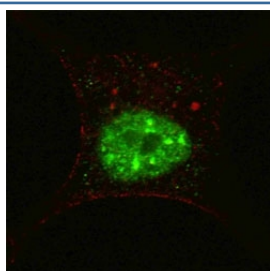
Catalog No.	Formulation	Size
F48455-0.4ML	In 1X PBS, pH 7.4, with 0.09% sodium azide	0.4 ml
F48455-0.08ML	In 1X PBS, pH 7.4, with 0.09% sodium azide	0.08 ml

[Bulk quote request](#)

Availability	1-3 business days
Species Reactivity	Human, Mouse
Format	Antigen affinity purified
Host	Rabbit
Clonality	Polyclonal (rabbit origin)
Isotype	Rabbit Ig
Purity	Antigen affinity
UniProt	P40763
Applications	Immunofluorescence : 1:200 Western Blot : 1:1000 IHC (Paraffin) : 1:50-1:100
Limitations	This phospho-p-STAT3 antibody is available for research use only.



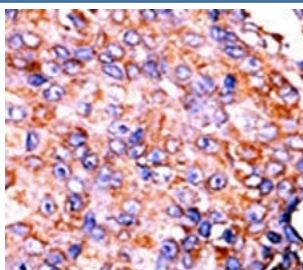
Western blot testing of p-STAT3 antibody and mouse liver tissue/lysate collected before (-) or after (+) stimulation with IL-6 injection in mouse portal vein. Data is kindly provided by Drs. E. Bard-Chapeau and G-S. Feng from the Burnham Institute (La Jolla, CA).



Fluorescent confocal image of SY5Y cells stained with p-STAT3 antibody at 1:200. Note the highly specific localization of the immunosignal to the nucleus.



Western blot testing of p-STAT3 antibody and HL-60 cells/lysate collected before (-) or after (+) stimulation with IFN-α.



IHC analysis of FFPE human breast carcinoma tissue stained with the p-STAT3 antibody.

Description

STAT3 is a member of the STAT protein family. In response to cytokines and growth factors, STAT family members are phosphorylated by the receptor associated kinases, and then form homo- or heterodimers that translocate to the cell nucleus where they act as transcription activators. This protein is activated through phosphorylation in response to various cytokines and growth factors including IFNs, EGF, IL5, IL6, HGF, LIF and BMP2. It mediates the expression of a variety of genes in response to cell stimuli, and thus plays a key role in many cellular processes such as cell growth and apoptosis. The small GTPase Rac1 has been shown to bind and regulate the activity of this protein. PIAS3 protein is a specific inhibitor of this protein.

Application Notes

Titration of the p-STAT3 antibody may be required due to differences in protocols and secondary/substrate sensitivity.

Immunogen

This p-STAT3 antibody was produced from rabbits immunized with a KLH conjugated synthetic phosphopeptide corresponding to amino acid residues surrounding pS727 of human STAT3.

Storage

Aliquot the p-STAT3 antibody and store frozen at -20°C or colder. Avoid repeated freeze-thaw cycles.