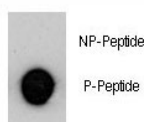


## p-MUC1 Antibody (pY1229) (F48593)

Catalog No.	Formulation	Size
F48593-0.4ML	In 1X PBS, pH 7.4, with 0.09% sodium azide	0.4 ml
F48593-0.08ML	In 1X PBS, pH 7.4, with 0.09% sodium azide	0.08 ml

[Bulk quote request](#)

<b>Availability</b>	1-3 business days
<b>Species Reactivity</b>	Human
<b>Format</b>	Antigen affinity purified
<b>Clonality</b>	Polyclonal (rabbit origin)
<b>Isotype</b>	Rabbit Ig
<b>Purity</b>	Antigen affinity
<b>UniProt</b>	P15941
<b>Applications</b>	Dot Blot : 1:500
<b>Limitations</b>	This p-MUC1 antibody is available for research use only.



Dot blot analysis of p-MUC1 antibody. 50ng of phos-peptide or nonphos-peptide per dot were spotted.

## Description

MUC1 is a member of the mucin family and a membrane bound, glycosylated phosphoprotein. The protein is anchored to the apical surface of many epithelia by a transmembrane domain, with the degree of glycosylation varying with cell type. It also includes a 20 aa variable number tandem repeat (VNTR) domain, with the number of repeats varying from 20 to 120 in different individuals. The protein serves a protective function by binding to pathogens and also functions in a cell signaling capacity. Overexpression, aberrant intracellular localization, and changes in glycosylation of this protein have been associated with carcinomas.

## Application Notes

Titration of the p-MUC1 antibody may be required due to differences in protocols and secondary/substrate sensitivity.

## **Immunogen**

This p-MUC1 antibody was produced from rabbits immunized with a KLH conjugated synthetic phosphopeptide corresponding to amino acid residues surrounding pY1229 of human MUC1.

## **Storage**

Aliquot the p-MUC1 antibody and store frozen at -20oC or colder. Avoid repeated freeze-thaw cycles.