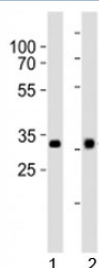


OTX2 Antibody (F52800)

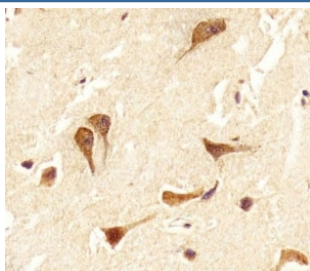
| Catalog No. | Formulation | Size |
|---------------|--|---------|
| F52800-0.4ML | In 1X PBS, pH 7.4, with 0.09% sodium azide | 0.4 ml |
| F52800-0.08ML | In 1X PBS, pH 7.4, with 0.09% sodium azide | 0.08 ml |

[Bulk quote request](#)

| | |
|-----------------------------|--|
| Availability | 1-3 business days |
| Species Reactivity | Human |
| Predicted Reactivity | Mouse, Rat |
| Format | Antigen affinity purified |
| Clonality | Polyclonal (rabbit origin) |
| Isotype | Rabbit Ig |
| Purity | Antigen affinity |
| UniProt | P32243 |
| Applications | IHC (Paraffin) : 1:25 Western Blot : 1:1000 |
| Limitations | This OTX2 antibody is available for research use only. |



Western blot analysis of lysate from 1) HepG2 and 2) Y79 cell line using OTX2 antibody at 1:1000.



IHC analysis of FFPE human brain section using OTX2 antibody; Ab was diluted at 1:25.

Description

Probably plays a role in the development of the brain and the sense organs. Can bind to the BCD target sequence (BTS): 5'-TCTAATCCC-3'.

Application Notes

Titration of the OTX2 antibody may be required due to differences in protocols and secondary/substrate sensitivity.

Immunogen

This OTX2 antibody was produced from a rabbit immunized with a KLH conjugated synthetic peptide between 201-226 amino acids from the C-terminal region of human OTX2.

Storage

Aliquot the OTX2 antibody and store frozen at -20oC or colder. Avoid repeated freeze-thaw cycles.