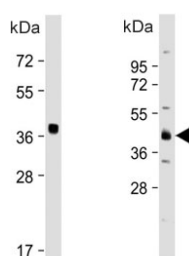


OTU1 Antibody / YOD1 / DUBA-8 (F54592)

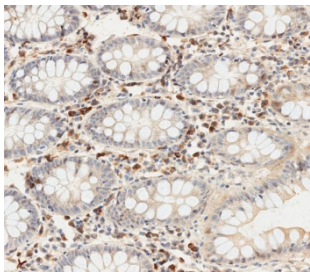
Catalog No.	Formulation	Size
F54592-0.4ML	In 1X PBS, pH 7.4, with 0.09% sodium azide	0.4 ml
F54592-0.08ML	In 1X PBS, pH 7.4, with 0.09% sodium azide	0.08 ml

[Bulk quote request](#)

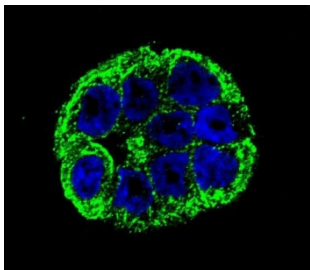
Availability	1-3 business days
Species Reactivity	Human
Format	Purified
Host	Rabbit
Clonality	Polyclonal (rabbit origin)
Isotype	Rabbit Ig
Purity	Antigen affinity purified
UniProt	Q5VVQ6
Localization	Cytoplasmic, nuclear
Applications	Immunofluorescence : 1:25 Western Blot : 1:500-1:2000 Immunohistochemistry (FFPE) : 1:25
Limitations	This OTU1 antibody is available for research use only.



Western blot testing of two different lots of human K562 cell lysate with OTU1 antibody.
Predicted molecular weight ~38 kDa.



IHC testing of FFPE human colon tissue with OTU1 antibody. HIER: steam section in pH6 citrate buffer for 20 min and allow to cool prior to staining.



Immunofluorescent staining of human WiDr cells with OTU1 antibody (green) and DAPI nuclear stain (blue).

Description

Deubiquitinating enzymes (DUBS) are proteases that specifically cleave ubiquitin linkages, negating the action of ubiquitin ligases. DUBA-8 belongs to a DUB subfamily characterized by an ovarian tumor (OTU) domain. [OMIM].

Application Notes

The stated application concentrations are suggested starting points. Titration of the OTU1 antibody may be required due to differences in protocols and secondary/substrate sensitivity.

Immunogen

A portion of amino acids 319-347 from the human protein was used as the immunogen for the OTU1 antibody.

Storage

Aliquot the OTU1 antibody and store frozen at -20oC or colder. Avoid repeated freeze-thaw cycles.