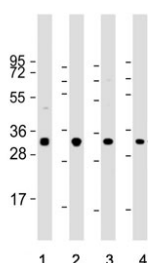


## Osteopontin Antibody (F41543)

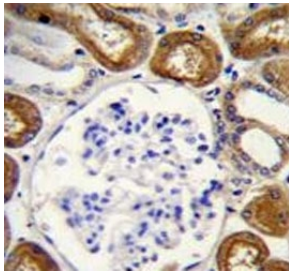
Catalog No.	Formulation	Size
F41543-0.4ML	In 1X PBS, pH 7.4, with 0.09% sodium azide	0.4 ml
F41543-0.08ML	In 1X PBS, pH 7.4, with 0.09% sodium azide	0.08 ml

[Bulk quote request](#)

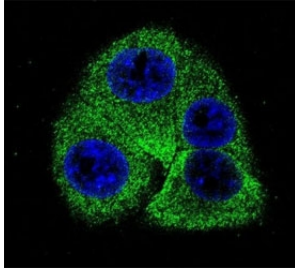
<b>Availability</b>	1-3 business days
<b>Species Reactivity</b>	Human
<b>Format</b>	Antigen affinity purified
<b>Host</b>	Rabbit
<b>Clonality</b>	Polyclonal (rabbit origin)
<b>Isotype</b>	Rabbit Ig
<b>Purity</b>	Antigen affinity
<b>UniProt</b>	P10451
<b>Localization</b>	Cytoplasmic
<b>Applications</b>	Western Blot : 1:1000 Immunohistochemistry (FFPE) : 1:50-1:100 Immunofluorescence : 1:10-1:50
<b>Limitations</b>	This Osteopontin antibody is available for research use only.



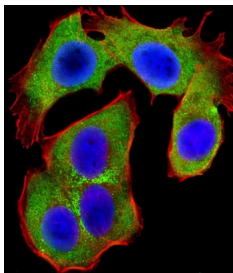
Western blot testing of human 1) HeLa, 2) HL60, 3) Jurkat and 4) MOLT4 cell lysate with Osteopontin antibody. Predicted molecular weight: 35-65 kDa depending on degree of glycosylation.



Osteopontin antibody immunohistochemistry analysis in formalin fixed and paraffin embedded human kidney tissue.



Confocal immunofluorescent analysis of Osteopontin antibody with human 293 cells followed by Alexa Fluor 488-conjugated goat anti-rabbit IgG (green). DAPI was used as a nuclear counterstain (blue).



Confocal immunofluorescent analysis of Osteopontin antibody with human MCF7 cells followed by Alexa Fluor 488-conjugated goat anti-rabbit IgG (green). Phalloidin (red) and DAPI (blue) counterstains were used.

## Description

Binds tightly to hydroxyapatite. Appears to form an integral part of the mineralized matrix. Probably important to cell-matrix interaction. Acts as a cytokine involved in enhancing production of interferon-gamma and interleukin-12 and reducing production of interleukin-10 and is essential in the pathway that leads to type I immunity (By similarity).

## Application Notes

Titration of the Osteopontin antibody may be required due to differences in protocols and secondary/substrate sensitivity.

## Immunogen

A portion of amino acids 14-40 from the human protein was used as the immunogen for this Osteopontin antibody.

## Storage

Aliquot the Osteopontin antibody and store frozen at -20oC or colder. Avoid repeated freeze-thaw cycles.

