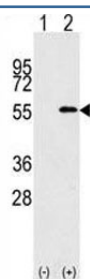


NUP50 Antibody (F40107)

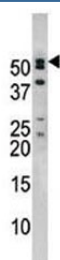
Catalog No.	Formulation	Size
F40107-0.4ML	In 1X PBS, pH 7.4, with 0.09% sodium azide	0.4 ml
F40107-0.08ML	In 1X PBS, pH 7.4, with 0.09% sodium azide	0.08 ml

[Bulk quote request](#)

Availability	1-3 business days
Species Reactivity	Human, Mouse
Predicted Reactivity	Rat
Format	Purified
Host	Rabbit
Clonality	Polyclonal (rabbit origin)
Isotype	Rabbit Ig
Purity	Purified
UniProt	Q9UKX7
Applications	Western Blot : 1:1000
Limitations	This NUP50 antibody is available for research use only.



Western blot analysis of NUP50 antibody and 293 cell lysate (2 ug/lane) either nontransfected (Lane 1) or transiently transfected with the NUP50 gene (2).



Western blot analysis of anti-NUP50 antibody and mouse brain tissue lysate

Description

The nuclear pore complex is a massive structure that extends across the nuclear envelope, forming a gateway that regulates the flow of macromolecules between the nucleus and the cytoplasm. Nucleoporins are the main components of the nuclear pore complex in eukaryotic cells. NUP50 is a member of the FG-repeat containing nucleoporins that functions as a soluble cofactor in importin- α : β -mediated nuclear protein import. NUP50 may serve as a binding site on the nuclear side of the pore complex for export receptor-cargo complexes. It interacts with multiple transport receptor proteins including p27Kip1. This interaction is required for correct intracellular transport and degradation of p27Kip1.

Application Notes

Titration of the NUP50 antibody may be required due to differences in protocols and secondary/substrate sensitivity.

Immunogen

A portion of amino acids 432-461 from the human protein was used as the immunogen for this NUP50 antibody.

Storage

Aliquot the NUP50 antibody and store frozen at -20°C or colder. Avoid repeated freeze-thaw cycles.