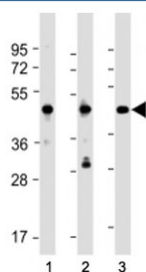


NSFL1C Antibody (F53995)

Catalog No.	Formulation	Size
F53995-0.2ML	In 1X PBS, pH 7.4, with 0.09% sodium azide	0.2 ml
F53995-0.05ML	In 1X PBS, pH 7.4, with 0.09% sodium azide	0.05 ml

[Bulk quote request](#)

Availability	1-3 business days
Species Reactivity	Human
Predicted Reactivity	Bovine, Mouse, Rat
Format	Antigen affinity purified
Host	Rabbit
Clonality	Polyclonal (rabbit origin)
Isotype	Rabbit Ig
Purity	Antigen affinity
UniProt	Q9UNZ2
Applications	Western Blot : 1:2000
Limitations	This NSFL1C antibody is available for research use only.



Western blot testing of NSFL1C antibody at 1:2000 + Lane 1: 293, 2: NCI-H1299 and 3: A431 whole cell lysate. Predicted molecular weight ~41 kDa.

Description

Reduces the ATPase activity of VCP. Necessary for the fragmentation of Golgi stacks during mitosis and for VCP-mediated reassembly of Golgi stacks after mitosis. May play a role in VCP-mediated formation of transitional endoplasmic reticulum (tER) (By similarity). Inhibits the activity of CTSL (in vitro).

Application Notes

The stated application concentrations are suggested starting points. Titration of the NSFL1C antibody may be required due to differences in protocols and secondary/substrate sensitivity.

Immunogen

Amino acids 37-71 from the human protein were used as the immunogen for this NSFL1C antibody.

Storage

Aliquot the NSFL1C antibody and store frozen at -20oC or colder. Avoid repeated freeze-thaw cycles.