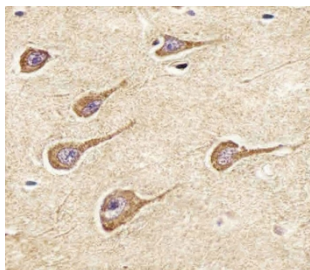


## NPY2R Antibody (F54756)

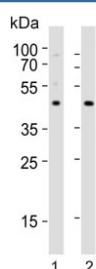
Catalog No.	Formulation	Size
F54756-0.4ML	In 1X PBS, pH 7.4, with 0.09% sodium azide	0.4 ml
F54756-0.08ML	In 1X PBS, pH 7.4, with 0.09% sodium azide	0.08 ml

[Bulk quote request](#)

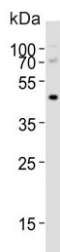
<b>Availability</b>	1-3 business days
<b>Species Reactivity</b>	Human, Mouse, Rat
<b>Format</b>	Purified
<b>Host</b>	Rabbit
<b>Clonality</b>	Polyclonal (rabbit origin)
<b>Isotype</b>	Rabbit Ig
<b>Purity</b>	Antigen affinity purified
<b>UniProt</b>	P49146
<b>Applications</b>	Western Blot : 1:500-1:1000 Immunohistochemistry (FFPE) : 1:25 Flow Cytometry : 1:25 (1x10 <sup>6</sup> cells)
<b>Limitations</b>	This NPY2R antibody is available for research use only.



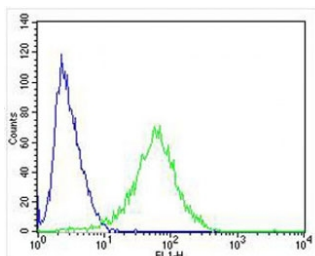
IHC testing of FFPE human brain tissue with NPY2R antibody. HIER: steam section in pH6 citrate buffer for 20 min and allow to cool prior to staining.



Western blot testing of 1) mouse brain and 2) rat brain tissue lysate with NPY2R antibody. Predicted molecular weight ~43 kDa.



Western blot testing of human kidney tissue lysate with NPY2R antibody. Predicted molecular weight ~43 kDa.



Flow cytometry testing of fixed and permeabilized human SH-SY5Y cells with NPY2R antibody; Blue=isotype control, Green= NPY2R antibody.

## Description

Receptor for neuropeptide Y and peptide YY. The rank order of affinity of this receptor for pancreatic polypeptides is PYY > NPY > PYY (3-36) > NPY (2-36) > [Ile-31, Gln-34] PP > [Leu- 31, Pro-34] NPY > PP, [Pro-34] PYY and NPY free acid. [UniProt]

## Application Notes

The stated application concentrations are suggested starting points. Titration of the NPY2R antibody may be required due to differences in protocols and secondary/substrate sensitivity.

## Immunogen

A portion of amino acids 29-65 from the human protein was used as the immunogen for the NPY2R antibody.

## Storage

Aliquot the NPY2R antibody and store frozen at -20oC or colder. Avoid repeated freeze-thaw cycles.