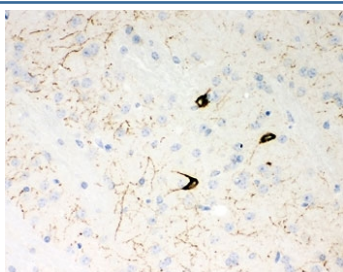


## NPY Antibody / Neuropeptide Y (R31709)

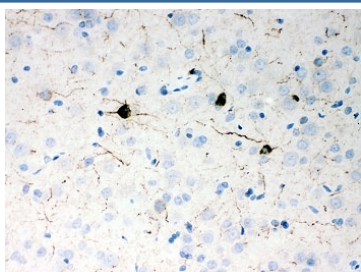
Catalog No.	Formulation	Size
R31709	0.5mg/ml if reconstituted with 0.2ml sterile DI water	100 ug

**Bulk quote request**

<b>Availability</b>	1-3 business days
<b>Species Reactivity</b>	Human, Mouse, Rat
<b>Format</b>	Antigen affinity purified
<b>Host</b>	Rabbit
<b>Clonality</b>	Polyclonal (rabbit origin)
<b>Isotype</b>	Rabbit IgG
<b>Purity</b>	Antigen affinity
<b>Buffer</b>	Lyophilized from 1X PBS with 2.5% BSA and 0.025% sodium azide
<b>Gene ID</b>	4852
<b>Localization</b>	Cytoplasmic & secreted
<b>Applications</b>	IHC (FFPE) : 0.5-1ug/ml Western Blot (recombinant Protein) : 0.5-1ug/ml
<b>Limitations</b>	This NPY antibody is available for research use only.



IHC-P: NPY antibody testing of mouse brain tissue



IHC-P: NPY antibody testing of rat brain tissue

kDa  
72-  
55-  
43-  
34-  
26-  
17-  
10- —

Western blot testing of 0.5ng/lane of human recombinant protein with NPY antibody.  
Predicted molecular weight ~11 kDa.

## Description

Neuropeptide Y is widely expressed in the central nervous system and influences many physiological processes, including cortical excitability, stress response, food intake, circadian rhythms, and cardiovascular function. The neuropeptide functions through G protein-coupled receptors to inhibit adenylyl cyclase, activate mitogen-activated protein kinase (MAPK), regulate intracellular calcium levels, and activate potassium channels. A polymorphism in this gene resulting in a change of leucine 7 to proline in the signal peptide is associated with elevated cholesterol levels, higher alcohol consumption, and may be a risk factor for various metabolic and cardiovascular diseases. Neuropeptide Y also exhibits antimicrobial activity against bacteria and fungi.

## Application Notes

The stated application concentrations are suggested starting amounts. Titration of the NPY antibody may be required due to differences in protocols and secondary/substrate sensitivity.

## Immunogen

An amino acid sequence from the middle region of human Neuropeptide Y (YPSKPDNPGEDAPAEDMARYYSALRHYINLITRQRY) was used as the immunogen for this NPY antibody (100% homologous in human, mouse and rat).

## Storage

After reconstitution, the NPY antibody can be stored for up to one month at 4oC. For long-term, aliquot and store at -20oC. Avoid repeated freezing and thawing.