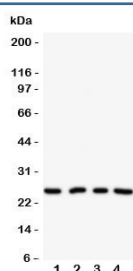


NPM2 Antibody (R31097)

Catalog No.	Formulation	Size
R31097	0.5mg/ml if reconstituted with 0.2ml sterile DI water	100 ug

Bulk quote request

Availability	1-3 business days
Species Reactivity	Human
Format	Antigen affinity purified
Host	Rabbit
Clonality	Polyclonal (rabbit origin)
Isotype	Rabbit IgG
Purity	Antigen affinity
Buffer	Lyophilized from 1X PBS with 2.5% BSA and 0.025% sodium azide/thimerosal
UniProt	Q86SE8
Applications	Western Blot : 0.5-1ug/ml
Limitations	This NPM2 antibody is available for research use only.



Western blot testing of NPM2 antibody on Lane 1: HeLa; 2: U87; 3: A549; 4: SMMC-7721 cell lysate. Predicted/observed size ~24KD

Description

Nucleophosmin/Nucleoplasmin Family Member 2 is a product of the NPM2 gene. Burns et al.(2003) found that female Npm2-null mice showed defects in preimplantation embryo development, with abnormalities in oocyte and early embryonic nuclei.

Application Notes

The stated application concentrations are suggested starting amounts. Titration of the NPM2 antibody may be required

due to differences in protocols and secondary/substrate sensitivity.

Immunogen

An amino acid sequence from the N-terminus of human Nucleophosmin 2 (QERRTWTFRPQLEGKQSCR) was used as the immunogen for this NPM2 antibody.

Storage

After reconstitution, the NPM2 antibody can be stored for up to one month at 4oC. For long-term, aliquot and store at -20oC. Avoid repeated freezing and thawing.