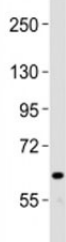


## NOTCH4 Antibody (F53420)

| Catalog No.   | Formulation                                | Size    |
|---------------|--|---------|
| F53420-0.4ML  | In 1X PBS, pH 7.4, with 0.09% sodium azide | 0.4 ml  |
| F53420-0.08ML | In 1X PBS, pH 7.4, with 0.09% sodium azide | 0.08 ml |

[Bulk quote request](#)

|                           |  |
|---------------------------|--|
| <b>Availability</b>       | 1-3 business days  |
| <b>Species Reactivity</b> | Human  |
| <b>Format</b>             | Antigen affinity purified                                |
| <b>Clonality</b>          | Polyclonal (rabbit origin)                               |
| <b>Isotype</b>            | Rabbit Ig  |
| <b>Purity</b>             | Antigen affinity   |
| <b>UniProt</b>            | Q99466   |
| <b>Applications</b>       | Western Blot : 1:2000                                    |
| <b>Limitations</b>        | This NOTCH4 antibody is available for research use only. |



Western blot testing of NOTCH4 antibody at 1:2000 dilution + human liver lysate;  
Predicted band size : 210 kDa.

## Description

Functions as a receptor for membrane-bound ligands Jagged1, Jagged2 and Delta1 to regulate cell-fate determination. Upon ligand activation through the released notch intracellular domain (NICD) it forms a transcriptional activator complex with RBPJ/RBPSUH and activates genes of the enhancer of split locus. Affects the implementation of differentiation, proliferation and apoptotic programs. May regulate branching morphogenesis in the developing vascular system (By similarity).

## Application Notes

Titration of the NOTCH4 antibody may be required due to differences in protocols and secondary/substrate sensitivity.

## Immunogen

This NOTCH4 antibody was produced from a rabbit immunized with a KLH conjugated synthetic peptide between 1819-1851 amino acids from the C-terminal region of human NOTCH4.

## Storage

Aliquot the NOTCH4 antibody and store frozen at -20oC or colder. Avoid repeated freeze-thaw cycles.