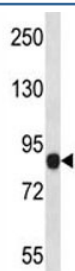


NLRP6 Antibody (F43035)

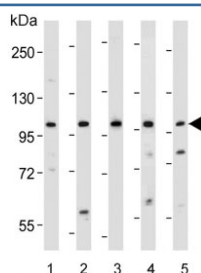
Catalog No.	Formulation	Size
F43035-0.4ML	In 1X PBS, pH 7.4, with 0.09% sodium azide	0.4 ml
F43035-0.08ML	In 1X PBS, pH 7.4, with 0.09% sodium azide	0.08 ml

[Bulk quote request](#)

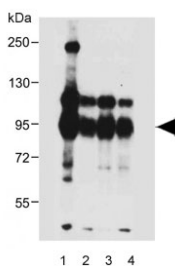
Availability	1-3 business days
Species Reactivity	Human
Format	Antigen affinity purified
Host	Rabbit
Clonality	Polyclonal (rabbit origin)
Isotype	Rabbit Ig
Purity	Antigen affinity
UniProt	P59044
Applications	Western Blot : 1:1000-1:4000
Limitations	This NLRP6 antibody is available for research use only.



NLRP6 antibody western blot analysis in human placenta tissue lysate. Predicted molecular weight ~99 kDa.



Western blot testing of human 1) Jurkat, 2) U266B1, 3) RPMI 8226, 4) HT-29 and 5) SW480 lysate with NLRP9 antibody. Predicted molecular weight ~99 kDa.



Western blot testing of human 1) placenta, 2) HL-60, 3) Jurkat and 4) U266B1 lysate with NLRP9 antibody. Predicted molecular weight ~99 kDa.

Description

NALPs are cytoplasmic proteins that form a subfamily within the larger CATERPILLER protein family. Most short NALPs, such as NALP6, have an N-terminal pyrin domain (PYD), followed by a NACHT domain, a NACHT-associated domain (NAD), and a C-terminal leucine-rich repeat (LRR) region. The long NALP, NALP1, also has a C-terminal extension containing a function to find domain (FIIND) and a caspase recruitment domain (CARD). NALPs are implicated in the activation of proinflammatory caspases (e.g., CASP1) via their involvement in multiprotein complexes called inflammasomes.

Application Notes

Titration of the NLRP6 antibody may be required due to differences in protocols and secondary/substrate sensitivity.

Immunogen

A portion of amino acids 168-197 from the human protein was used as the immunogen for this NLRP6 antibody.

Storage

Aliquot the NLRP6 antibody and store frozen at -20oC or colder. Avoid repeated freeze-thaw cycles.