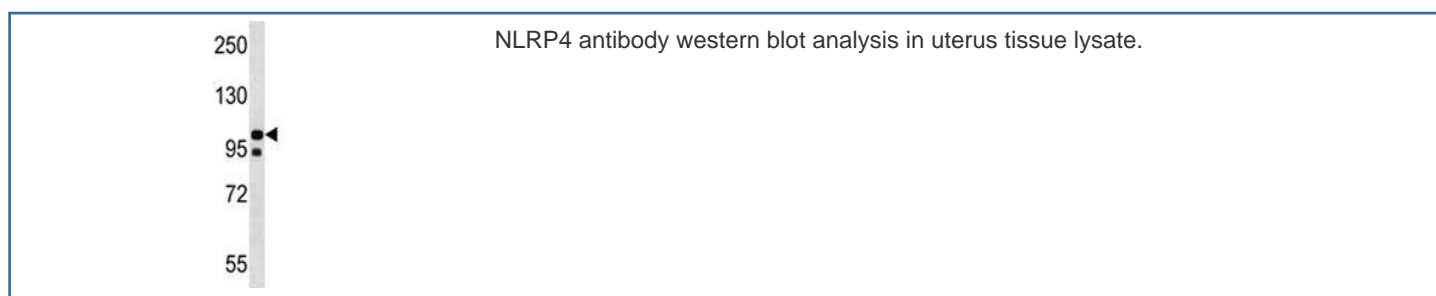


NLRP4 Antibody (F46773)

Catalog No.	Formulation	Size
F46773-0.4ML	In 1X PBS, pH 7.4, with 0.09% sodium azide	0.4 ml
F46773-0.08ML	In 1X PBS, pH 7.4, with 0.09% sodium azide	0.08 ml

[Bulk quote request](#)

Availability	1-3 business days
Species Reactivity	Human
Format	Antigen affinity purified
Host	Rabbit
Clonality	Polyclonal (rabbit origin)
Isotype	Rabbit Ig
Purity	Antigen affinity
UniProt	Q96MN2
Applications	Western Blot : 1:1000
Limitations	This NLRP4 antibody is available for research use only.



Description

NALPs are cytoplasmic proteins that form a subfamily within the larger CATERPILLER protein family. Most short NALPs, such as NALP4, have an N-terminal pyrin (MEFV; MIM 608107) domain (PYD), followed by a NACHT domain, a NACHT-associated domain (NAD), and a C-terminal leucine-rich repeat (LRR) region. The long NALP, NALP1 (MIM 606636), also has a C-terminal extension containing a function to find domain (FIIND) and a caspase recruitment domain (CARD). NALPs are implicated in the activation of proinflammatory caspases (e.g., CASP1; MIM 147678) via their involvement in multiprotein complexes called inflammasomes (Tschoopp et al., 2003 [PubMed 12563287]).

Application Notes

Titration of the NLRP4 antibody may be required due to differences in protocols and secondary/substrate sensitivity.

Immunogen

A portion of amino acids 121-149 from the human protein was used as the immunogen for this NLRP4 antibody.

Storage

Aliquot the NLRP4 antibody and store frozen at -20oC or colder. Avoid repeated freeze-thaw cycles.