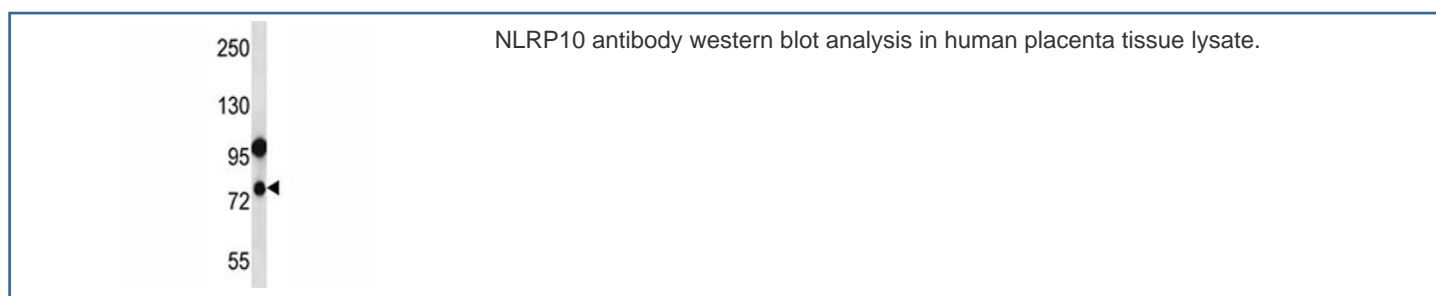


## NLRP10 Antibody (F43011)

Catalog No.	Formulation	Size
F43011-0.4ML	In 1X PBS, pH 7.4, with 0.09% sodium azide	0.4 ml
F43011-0.08ML	In 1X PBS, pH 7.4, with 0.09% sodium azide	0.08 ml

[Bulk quote request](#)

<b>Availability</b>	1-3 business days
<b>Species Reactivity</b>	Human
<b>Format</b>	Antigen affinity purified
<b>Host</b>	Rabbit
<b>Clonality</b>	Polyclonal (rabbit origin)
<b>Isotype</b>	Rabbit Ig
<b>Purity</b>	Antigen affinity
<b>UniProt</b>	Q86W26
<b>Applications</b>	Western Blot : 1:1000
<b>Limitations</b>	This NLRP10 antibody is available for research use only.



## Description

Members of the NALP protein family typically contain a NACHT domain, a NACHT-associated domain (NAD), a C-terminal leucine-rich repeat (LRR) region, and an N-terminal pyrin domain (PYD). The protein encoded by this gene belongs to the NALP protein family despite lacking the LRR region. This protein likely plays a regulatory role in the innate immune system. The protein belongs to the signal-induced multiprotein complex, the inflammasome, that activates the pro-inflammatory caspases, caspase-1 and caspase-5. Other experiments indicate that this gene acts as a multifunctional negative regulator of inflammation and apoptosis. [provided by RefSeq].

## Application Notes

Titration of the NLRP10 antibody may be required due to differences in protocols and secondary/substrate sensitivity.

## Immunogen

A portion of amino acids 466-494 from the human protein was used as the immunogen for this NLRP10 antibody.

## Storage

Aliquot the NLRP10 antibody and store frozen at -20oC or colder. Avoid repeated freeze-thaw cycles.