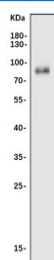


## Nfe2l3 Antibody / Nrf3 (RQ6386)

Catalog No.	Formulation	Size
RQ6386	0.5mg/ml if reconstituted with 0.2ml sterile DI water	100 ug

**Bulk quote request**

<b>Availability</b>	1-3 business days
<b>Species Reactivity</b>	Mouse
<b>Format</b>	Purified
<b>Host</b>	Rabbit
<b>Clonality</b>	Polyclonal (rabbit origin)
<b>Isotype</b>	Rabbit IgG
<b>Purity</b>	Antigen affinity purified
<b>Buffer</b>	Lyophilized from 1X PBS with 2% Trehalose
<b>UniProt</b>	Q9WTM4
<b>Applications</b>	Western Blot : 0.5-1ug/ml Direct ELISA : 0.1-0.5ug/ml
<b>Limitations</b>	This Nfe2l3 antibody is available for research use only.



Western blot testing of mouse NIH 3T3 cell lysate with Nfe2l3 antibody. Predicted molecular weight ~73 kDa.

## Description

Nuclear factor (erythroid 2)-like factor 3, also known as NFE2L3 or 'NRF3', is a transcription factor that in humans is encoded by the Nfe2l3 gene. This gene encodes a member of the cap 'n' collar basic-region leucine zipper family of transcription factors. The encoded protein heterodimerizes with small musculoaponeurotic fibrosarcoma factors to bind antioxidant response elements in target genes. This protein is a membrane bound glycoprotein that is targeted to the endoplasmic reticulum and the nuclear envelope. Pseudogenes of this gene are found on chromosomes 16, 17, and 18.

## Application Notes

Optimal dilution of the Nfe2l3 antibody should be determined by the researcher.

## Immunogen

Recombinant mouse protein (amino acids E66-K653) was used as the immunogen for the Nfe2l3 antibody.

## Storage

After reconstitution, the Nfe2l3 antibody can be stored for up to one month at 4oC. For long-term, aliquot and store at -20oC. Avoid repeated freezing and thawing.