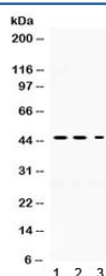


## Neuroserpin Antibody (R32312)

Catalog No.	Formulation	Size
R32312	0.5mg/ml if reconstituted with 0.2ml sterile DI water	100 ug

**Bulk quote request**

<b>Availability</b>	1-3 business days
<b>Species Reactivity</b>	Human, Mouse, Rat
<b>Format</b>	Antigen affinity purified
<b>Host</b>	Rabbit
<b>Clonality</b>	Polyclonal (rabbit origin)
<b>Isotype</b>	Rabbit IgG
<b>Purity</b>	Antigen affinity
<b>Buffer</b>	Lyophilized from 1X PBS with 2.5% BSA and 0.025% sodium azide
<b>UniProt</b>	Q99574
<b>Applications</b>	Western Blot : 0.1-0.5ug/ml
<b>Limitations</b>	This Neuroserpin antibody is available for research use only.



Western blot testing of 1) rat brain, 2) mouse brain, and 3) PANC lysate with Neuroserpin antibody. Expected/observed molecular weight ~46 kDa.

## Description

Neuroserpin is a protein that in humans is encoded by the SERPINI1 gene. This gene encodes a member of the serpin superfamily of serine proteinase inhibitors. The protein is primarily secreted by axons in the brain, and preferentially reacts with and inhibits tissue-type plasminogen activator. It is thought to play a role in the regulation of axonal growth and the development of synaptic plasticity. Mutations in this gene result in familial encephalopathy with neuroserpin inclusion bodies (FENIB), which is a dominantly inherited form of familial encephalopathy and epilepsy characterized by the accumulation of mutant neuroserpin polymers. Multiple alternatively spliced variants, encoding the same protein, have been identified.

## Application Notes

Optimal dilution of the Neuroserpin antibody should be determined by the researcher.

## Immunogen

Amino acids KAQLVEEWANSVKKQKVEVYLPRFTVEQEIDLKDV LKA L of human Neuroserpin/SERPINI1 were used as the immunogen for the Neuroserpin antibody.

## Storage

After reconstitution, the Neuroserpin antibody can be stored for up to one month at 4°C. For long-term, aliquot and store at -20°C. Avoid repeated freezing and thawing.