

## Neuron Specific Enolase Antibody (F48200)

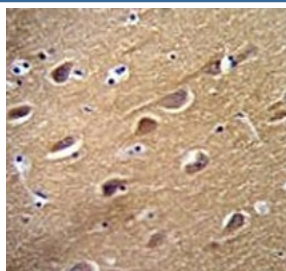
Catalog No.	Formulation	Size
F48200-0.4ML	In 1X PBS, pH 7.4, with 0.09% sodium azide	0.4 ml
F48200-0.08ML	In 1X PBS, pH 7.4, with 0.09% sodium azide	0.08 ml

**Bulk quote request**

<b>Availability</b>	1-3 business days
<b>Species Reactivity</b>	Human
<b>Predicted Reactivity</b>	Mouse, Rat
<b>Format</b>	Antigen affinity purified
<b>Clonality</b>	Polyclonal (rabbit origin)
<b>Isotype</b>	Rabbit Ig
<b>Purity</b>	Antigen affinity
<b>UniProt</b>	P09104
<b>Applications</b>	Western Blot : 1:1000 IHC (Paraffin) : 1:50-1:100
<b>Limitations</b>	This Neuron Specific Enolase antibody is available for research use only.



Western blot analysis of Neuron Specific Enolase antibody and Y79 lysate. Predicted molecular weight: ~47 kDa.



Neuron Specific Enolase antibody immunohistochemistry analysis in formalin fixed and paraffin embedded human brain tissue.

## Description

NSE is one of the three enolase isoenzymes found in mammals. This isoenzyme, a homodimer, is found in mature neurons and cells of neuronal origin. A switch from alpha to gamma enolase occurs in neural tissue during development in rats and primates. [Wiki]

## Application Notes

The stated application concentrations are suggested starting amounts. Titration of the Neuron Specific Enolase antibody may be required due to differences in protocols and secondary/substrate sensitivity.

## Immunogen

A portion of amino acids 213-239 from human ENO2 was used as the immunogen for this Neuron Specific Enolase antibody.

## Storage

Store at 4oC for up to one month. For long term, aliquot the Neuron Specific Enolase antibody and store frozen at -20oC or colder. Avoid repeated freeze-thaw cycles.