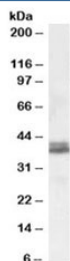


## NDEL1 Antibody (R33327)

Catalog No.	Formulation	Size
R33327-100UG	0.5 mg/ml in 1X TBS, pH7.3, with 0.5% BSA (US sourced) and 0.02% sodium azide	100 ug

[Bulk quote request](#)

Availability	1-3 business days
Species Reactivity	Human
Predicted Reactivity	Cow, Dog, Mouse, Pig, Rat
Format	Antigen affinity purified
Clonality	Polyclonal (goat origin)
Isotype	Goat Ig
Purity	Antigen affinity
UniProt	Q9GZM8
Gene ID	81565
Applications	Western Blot : 0.1-0.3ug/ml ELISA (peptide) LOD : 1:8000
Limitations	This NDEL1 antibody is available for research use only.



Western blot testing of human cerebellum lysate with NDEL1 antibody at 0.1ug/ml.  
Predicted molecular weight: ~38/41/37kDa (isoforms 1/2/3).

## Description

Additional name(s) for this target protein: NudE nuclear distribution gene E homolog (A. nidulans)-like 1

## Application Notes

Optimal dilution of the NDEL1 antibody should be determined by the researcher.

## Immunogen

Amino acids CRNFAKDQASRKS<sub>Y</sub> were used as the immunogen for this NDEL1 antibody. This sequence is common to isoforms 1/2/3 of UniProt no. Q9GZM8.

## Storage

Aliquot and store the NDEL1 antibody at -20oC.