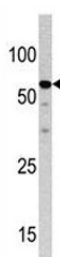


## NCAPH2 Antibody (F40112)

Catalog No.	Formulation	Size
F40112-0.4ML	In 1X PBS, pH 7.4, with 0.09% sodium azide	0.4 ml
F40112-0.08ML	In 1X PBS, pH 7.4, with 0.09% sodium azide	0.08 ml

[Bulk quote request](#)

<b>Availability</b>	1-3 business days
<b>Species Reactivity</b>	Human
<b>Format</b>	Purified
<b>Clonality</b>	Polyclonal (rabbit origin)
<b>Isotype</b>	Rabbit Ig
<b>Purity</b>	Purified
<b>UniProt</b>	Q6IBW4
<b>Applications</b>	Western Blot : 1:1000
<b>Limitations</b>	This NCAPH2 antibody is available for research use only.



Western blot analysis of NCAPH2 antibody and HepG2 lysate.

## Description

Structural maintenance of chromosomes (SMC) and non-SMC condensin proteins associate into complexes that have been implicated in the process of chromosome condensation. A crucial prerequisite for accurate segregation of replicated sister chromatids is the condensation of the chromosomes into a manageable form prior to metaphase. The condensin I complex consists of two SMC subunits, SMC2 and SMC4, and three non-SMC subunits, CAP-H, CAP-G, and CAP-D2. An alternative complex, the condensin II complex, contains alternate non-SMC subunits, CAP-G2, CAP-H2, and CAP-D3. CAP-H2 is also known as Non-SMC condensin II complex, subunit H2 (NCAPH2) or kleisin beta isoform 2. The three non-SMC subunits in the condensing complexes form a regulatory subcomplex that is required to activate the SMC ATPases and to promote mitosis-specific chromatin binding of the holocomplex. The precise individual functions of each non-SMC

protein in activation remain to be determined.

## **Application Notes**

Titration of the NCAPH2 antibody may be required due to differences in protocols and secondary/substrate sensitivity.

## **Immunogen**

A portion of amino acids 198-227 from the human protein was used as the immunogen for this NCAPH2 antibody.

## **Storage**

Aliquot the NCAPH2 antibody and store frozen at -20oC or colder. Avoid repeated freeze-thaw cycles.