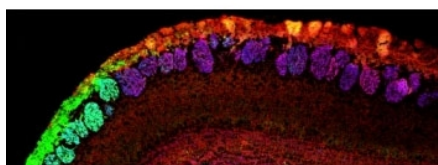


NCAM2 Antibody (R34689)

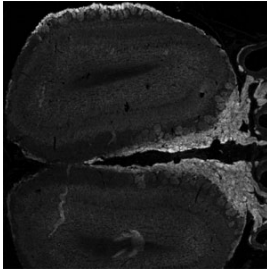
Catalog No.	Formulation	Size
R34689-100UG	0.5 mg/ml in 1X TBS, pH7.3, with 0.5% BSA (US sourced) and 0.02% sodium azide	100 ug

[Bulk quote request](#)

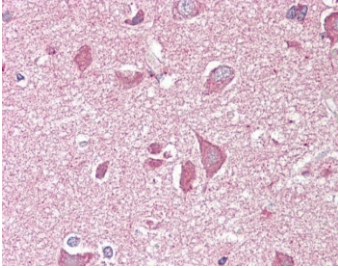
Availability	1-3 business days
Species Reactivity	Human, Mouse
Predicted Reactivity	Rat, Dog, Cow
Format	Antigen affinity purified
Host	Goat
Clonality	Polyclonal (goat origin)
Isotype	Goat Ig
Purity	Antigen affinity
Gene ID	4685
Localization	Cell membrane
Applications	Immunohistochemistry (Frozen) : 0.5-1ug/ml Immunohistochemistry (FFPE) : 3.75ug/ml ELISA (peptide) LOD : 1:4000
Limitations	This NCAM2 antibody is available for research use only.



IHC: 48h-staining of PFA-perfused cryosection of mouse olfactory bulb with NCAM2 antibody at 0.5ug/ml. HIER: pH6 citrate buffer at 95oC for 10min. Staining: NCAM2 (red), VGLUT2 (blue) and NQO1 (green).



IHC 24h-staining of a PFA-perfused cryosection of mouse olfactory bulb with NCAM2 antibody at 0.5ug/ml. Strong staining of axon bundles (right middle) and moderate peripheral staining outside the glomeruli (top) is seen. Ag retrieval: methanol (-20oC, 10min), then 1% SDS (10min).



IHC testing of FFPE human cortex (brain) tissue with NCAM2 antibody at 3.75ug/ml. Required HIER: steamed antigen retrieval with pH6 citrate buffer; AP-staining.

Description

Additional name(s) for this target protein: Neural cell adhesion molecule 2, OCAM

Application Notes

Optimal dilution of the NCAM2 antibody should be determined by the researcher.

Immunogen

Amino acids KVSNDIIQSKEDDSK were used as the immunogen for this NCAM2 antibody.

Storage

Aliquot and store the NCAM2 antibody at -20oC.